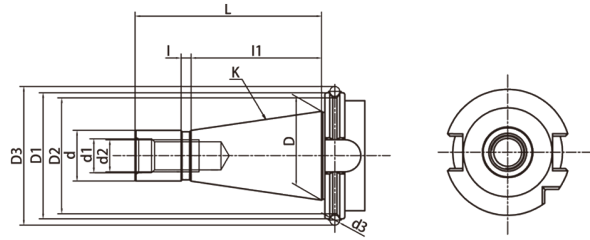
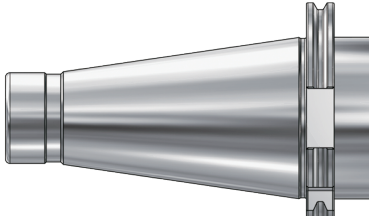


GOST

TOOL HOLDERS

GOST Taper Standard GOST 锥柄标准



Size	D	D1	D2	D3	D4	d	d1	d2	d3	L	l	l1
SK30	31.75	50	46	55.070	44	17.4	13	M12	4	68.4	3	48.4
SK40	44.45	63	58	69.340	55	25.3	17	M16	5	93.4	5	65.4
SK50	69.85	100	94	107.610	85	39.6	25	M24	6	126.8	8	101.8

Taper standard: GOST 25827-93

Material: Alloyed case hardened steel

Surface Treatment: Blackening

Taper tolerance: <AT3

Hardness: HRC 56-60

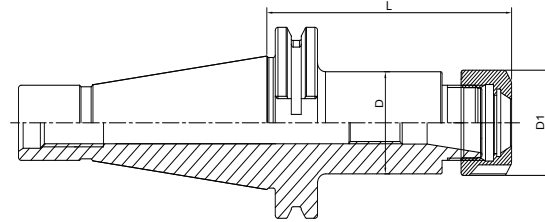
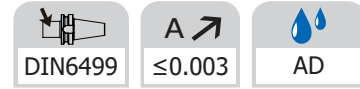
Carbon depth: 0.8±0.2mm

Surface Roughness: Ra<0.2µm

GOST TOOLING SYSTEM GOST 工具系统

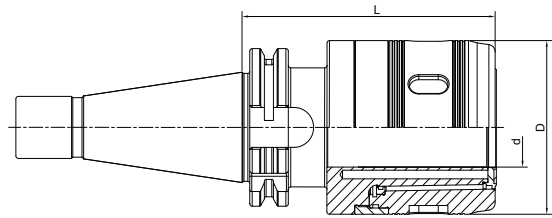
ER Collet Chuck	H.04
ER弹簧夹头刀柄	H.04
Power Milling Chuck.....	H.05
强力铣刀柄.....	H.05
Face Mill Holder	H.05
面铣刀柄	H.05
Combi Shell Mill Holder	H.06
混合插入式铣刀柄.....	H.06
End Mill Holder.....	H.07
侧固刀柄.....	H.07
Morse Taper Adapter.....	H.08
带扁尾莫氏刀柄.....	H.08
Morse Taper Adapter.....	H.08
带螺纹孔莫氏刀柄.....	H.08
APU Drill Chuck Holder	H.09
APU钻夹头刀柄.....	H.09
Quick Change Tapping Chuck.....	H.09
弹性快换攻丝刀柄.....	H.09



ER Collet Chuck
ER 弹簧夹头刀柄


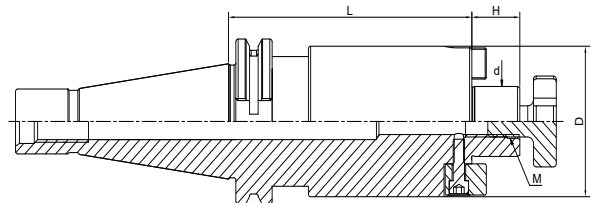
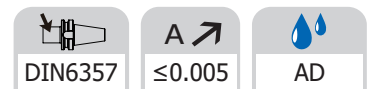
Size	D	D1	L	Capacity
SK40-ER16-70 GOST	28	32	70	1-10
SK40-ER25-70 GOST	42	42	70	2-16
SK40-ER32-70 GOST	40	50	70	2-20
SK40-ER40-80 GOST	50	63	80	3-26
SK40-ER16-100 GOST	28	32	100	1-10
SK40-ER25-100 GOST	42	42	100	2-16
SK40-ER32-100 GOST	40	50	100	2-20
SK40-ER40-100 GOST	50	63	100	3-26
SK40-ER16-160T GOST	28	32	160	1-10
SK40-ER25-160 GOST	42	42	160	2-16
SK40-ER32-160 GOST	40	50	160	2-20
SK40-ER40-160 GOST	50	63	160	3-26
SK50-ER16-80 GOST	28	32	80	1-10
SK50-ER25-80 GOST	42	42	80	2-16
SK50-ER32-70 GOST	50	50	70	2-20
SK50-ER40-80 GOST	63	63	80	3-26
SK50-ER16-100 GOST	28	32	100	1-10
SK50-ER25-100 GOST	42	42	100	2-16
SK50-ER32-100 GOST	50	50	100	2-20
SK50-ER40-100 GOST	63	63	100	3-26
SK50-ER16-160 GOST	28	32	160	1-10
SK50-ER25-160 GOST	42	42	160	2-16
SK50-ER32-160 GOST	50	50	160	2-20
SK50-ER40-160 GOST	63	63	160	3-26

Power Milling Chuck
强力铣刀柄



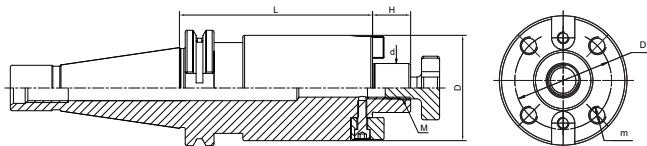
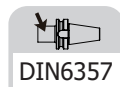
Size	d	D	L	Capacity
SK40-HC20-85 GOST	20	50	85	3-16; 20
SK40-HC25-100 GOST	25	59	100	3-20; 25
SK40-HC32-105 GOST	32	72	105	3-25; 32
SK50-HC20-105 GOST	20	50	105	3-16; 20
SK50-HC25-105 GOST	25	59	105	3-20; 25
SK50-HC32-110 GOST	32	72	110	3-25; 32
SK50-HC42-110 GOST	42	99	110	3-32; 42

Face Mill Holder
面铣刀柄



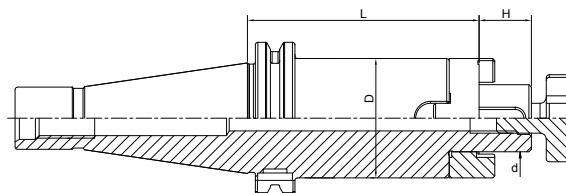
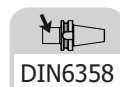
Size	d	D	L	H	M
SK40-FMB16-45 GOST	16	38	45	17	M8
SK40-FMB22-45 GOST	22	48	45	19	M10
SK40-FMB27-40 GOST	27	58	40	21	M12
SK40-FMB32-55 GOST	32	78	55	24	M16
SK50-FMB16-40 GOST	16	38	40	17	M8
SK50-FMB22-45 GOST	22	48	45	19	M10
SK50-FMB27-45 GOST	27	58	45	21	M12
SK50-FMB32-50 GOST	32	78	50	24	M16

Face Mill Holder 面铣刀柄



Size	d	D	D1	L	H	M	m
SK40-FMB40-55 GOST	40	88	66.7	55	27	M20	M12
SK50-FMB40-55 GOST	40	88	66.7	55	27	M20	M12

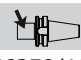


Combi Shell Mill Holder 混合插入式铣刀柄

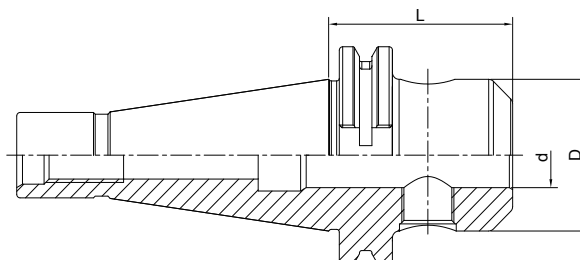


Size	d	D	H	L
SK40-SEMC16-55 GOST	16	32	17	55
SK40-SEMC22-55 GOST	22	40	19	55
SK40-SEMC27-55 GOST	27	48	21	55
SK40-SEMC32-60 GOST	32	58	24	60
SK40-SEMC40-60 GOST	40	70	27	60
SK50-SEMC16-55 GOST	16	32	17	55
SK50-SEMC22-55 GOST	22	40	19	55
SK50-SEMC27-55 GOST	27	48	21	55
SK50-SEMC32-55 GOST	32	58	24	55
SK50-SEMC40-55 GOST	40	70	27	55

End Mill Holder Weldon
侧固刀柄

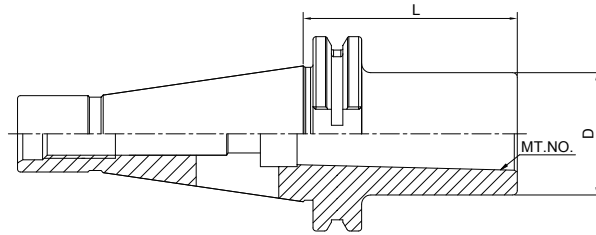
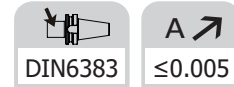


 DIN6359/1835B	 A ↗ ≤0.005	 AD
--	--	---



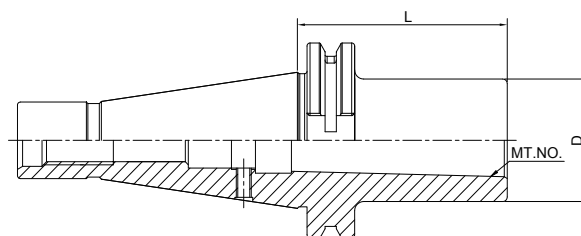
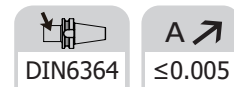
Size	d	D	L	M	Screw Quantity
SK40-SLA6-50 GOST	6	25	50	M6	1
SK40-SLA8-50 GOST	8	28	50	M8	1
SK40-SLA10-50 GOST	10	35	50	M10	1
SK40-SLA12-50 GOST	12	42	50	M12	1
SK40-SLA14-50 GOST	14	44	50	M12	1
SK40-SLA16-63 GOST	16	48	63	M14	1
SK40-SLA18-63 GOST	18	50	63	M14	1
SK40-SLA20-63 GOST	20	52	63	M16	1
SK40-SLA25-100 GOST	25	65	100	M18*2	2
SK40-SLA32-100 GOST	32	72	100	M20*2	2
SK40-SLA40-120 GOST	40	80	120	M20*2	2
SK50-SLA6-63 GOST	6	25	63	M6	1
SK50-SLA8-63 GOST	8	28	63	M8	1
SK50-SLA10-63 GOST	10	35	63	M10	1
SK50-SLA12-63 GOST	12	42	63	M12	1
SK50-SLA14-63 GOST	14	44	63	M12	1
SK50-SLA16-63 GOST	16	48	63	M14	1
SK50-SLA18-63 GOST	18	50	63	M14	1
SK50-SLA20-63 GOST	20	52	63	M16	1
SK50-SLA25-80 GOST	25	65	80	M18*2	2
SK50-SLA32-100 GOST	32	72	100	M20*2	2
SK50-SLA40-100 GOST	40	80	100	M20*2	2

Morse Taper Adapter with Tang 带扁尾莫氏刀柄



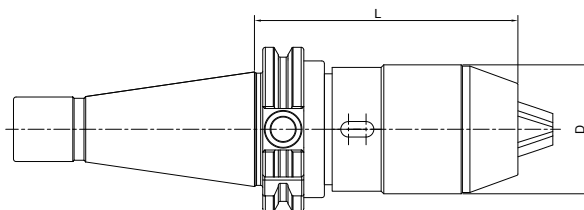
Size	MT. NO.	D	L
SK40-MTA1-50 GOST	1	25	50
SK40-MTA2-50 GOST	2	32	50
SK40-MTA3-70 GOST	3	40	70
SK40-MTA4-95 GOST	4	48	95
SK50-MTA1-45 GOST	1	25	45
SK50-MTA2-60 GOST	2	32	60
SK50-MTA3-65 GOST	3	40	65
SK50-MTA4-95 GOST	4	48	95
SK50-MTA5-105 GOST	5	63	105

Morse Taper Adapter with Drawbar 带螺纹孔莫氏刀柄



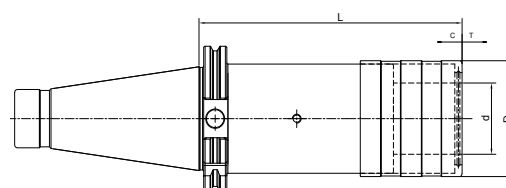
Size	MT. NO.	D	L
SK40-MTB1-50 GOST	1	25	50
SK40-MTB2-50 GOST	2	32	50
SK40-MTB3-70 GOST	3	40	70
SK40-MTB4-95 GOST	4	48	95
SK50-MTB1-45 GOST	1	25	45
SK50-MTB2-60 GOST	2	32	60
SK50-MTB3-65 GOST	3	40	65
SK50-MTB4-95 GOST	4	48	95
SK50-MTB5-105 GOST	5	63	105

APU Drill Chuck Holder APU 钻夹头刀柄



Size	D	L	Capacity
SK40-APU13-100 GOST	48	100	1-13
SK40-APU16-110 GOST	53	110	3-16
SK50-APU13-100 GOST	48	100	1-13
SK50-APU16-100 GOST	53	100	3-16

Quick Change Tapping Chuck with Length Compensation 弹性快换攻丝刀柄



Size	D	d	L	T	C
SK40-TC312-59 GOST	36	19	59	7.5	7.5
SK40-TC820-97 GOST	54	31	97	12.5	12.5
SK40-TC1433-156 GOST	78	48	156	22	22
SK50-TC312-63 GOST	38	19	63	7.5	7.5
SK50-TC820-97 GOST	54	31	97	12.5	12.5
SK50-TC1433-140 GOST	78	48	140	22	22