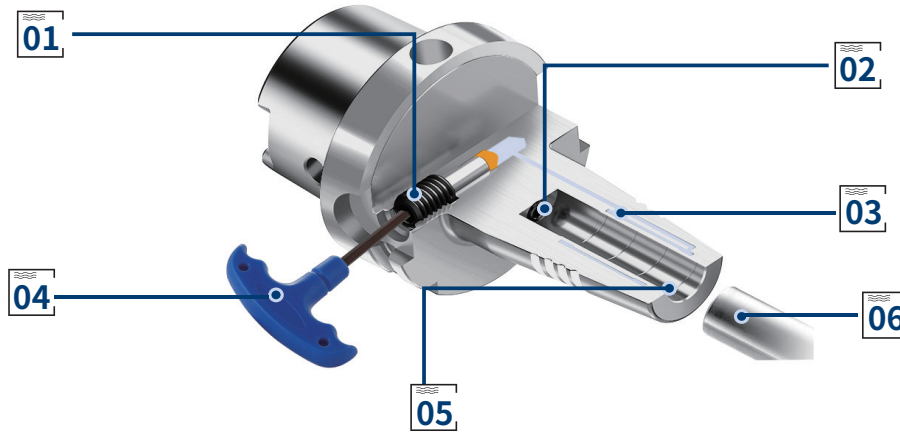


TOOL HOLDERS

HYDRAULIC

Hydraulic Chuck Construction

液压刀柄构造图



01 Lock Screw

Tighten to locking screw to a dead stop.

01 锁紧螺钉

通过锁紧螺钉将液压油压缩到油腔中

02 Adjust Screw

To preset cutting tools.

02 定位螺钉

用于调节刀具

03 Expansion Sleeve and Chamber System

The chamber system fills with hydraulic fluid, exerting a damping effect on the clamped tool.

03 膨胀套和油腔

通过对油腔内液压油施加压力，从而膨胀夹紧刀具

04 Hex Key

To tighten locking screw for fast cutting tool change.

04 内六角扳手

用于锁紧螺钉，实现快速换刀

05 The Grooves

The large clamping pressure creates a displacement of oil, grease, or lubricant residues into the groove, so bore surfaces remains dry.

05 污垢槽

液压刀柄的巨大夹紧压力会导致油、油脂或润滑剂残留物进入凹槽，从而使表面保持干燥。

06 Cutting Tool

The cutting tool is clamped with high run-out.

06 刀具

直接夹持圆柱形刀具



High Precision

The hydraulic chuck is with high precision, which greatly improves the dimensional accuracy, effectively prevents the tool from breaking, and reduces tool wear.

精度高

液压刀柄极高的夹持精度在钻孔和铰孔加工时大大提高孔的尺寸精度并有效防止断刀，在铣削加工中则使多刃刀具各切削刃能够均匀地切入工件，从而改善切削状态，降低刀具磨损。

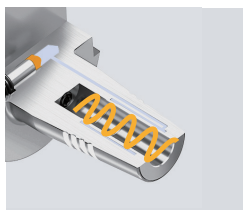


Large Clamping Force

The special clamping method makes it evenly clamp the cutting tool 360 degrees, with large clamping force, good rigidity, and higher clamping torque.

夹持力大

液压刀柄特殊的夹持方式使之 360 度均匀夹紧刀具，夹持力大，刚性好，能够传递更高的夹持扭矩。

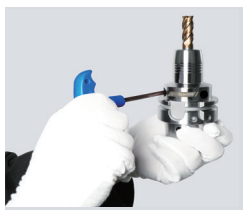


Better Anti-Vibration Result

The damping structure has excellent damping and shock absorption performance. It can reduce the vibration generated in the cutting process and improve the surface quality of the workpiece.

减震效果好

液压刀柄油腔内的油增加结构阻尼，从而改善刀柄夹持的动力学特性，使之具有优良的阻尼减震性能。可以降低切削加工中产生的振动，提高工件的表面质量。



Easy to Install and Remove

Easy to insert and remove the cutting tool by a hex wrench.

装卸简单

液压刀柄装卸刀具非常方便，只要使用一把六角扳手就可以轻松地装卸刀具，不需要任何辅助装置。

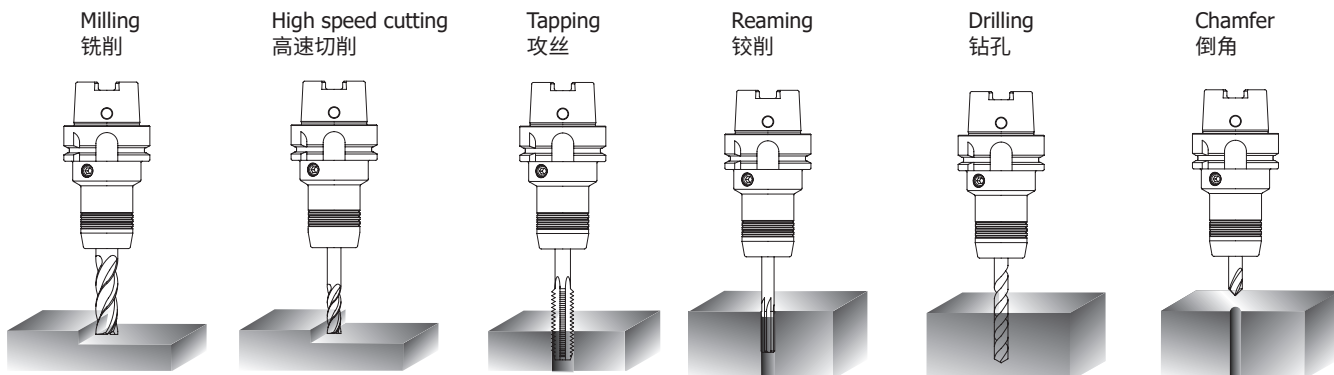


Hydraulic Collet

One tool holder can clamp different cutting tool diameters by collets.

适合高速加工

液压刀柄受空腔壁的限制，高速旋转时不产生离心力，适合高速加工。



HYDRAULIC TOOLING SYSTEM

HYDRAULIC 工具系统

HYDRO

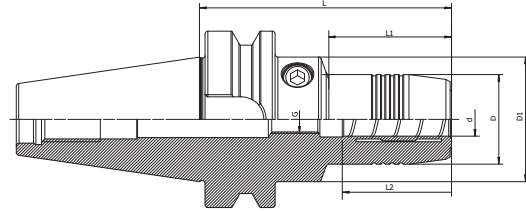
BT Hydraulic Chuck, Standard	B.06
BT 液压刀柄, 标准型	B.06
BBT Hydraulic Chuck, Standard	B.09
BBT 液压刀柄, 标准型	B.09
SK Hydraulic Chuck, Standard	B.10
SK 液压刀柄, 标准型	B.10
CAT Hydraulic Chuck, Standard	B.12
CAT 液压刀柄, 标准型	B.12
HSK-A Hydraulic Chuck, Standard	B.13
HSK-A 液压刀柄, 标准型	B.13
HSK-E Hydraulic Chuck, Standard.....	B.16
HSK-E 液压刀柄, 标准型	B.16
HSK-F Hydraulic Chuck, Standard.....	B.16
HSK-F 液压刀柄, 标准型	B.16
BT Hydraulic Chuck, Power Design.....	B.17
BT 液压刀柄, 强力型	B.17
SK Hydraulic Chuck, Power Design.....	B.17
SK 液压刀柄, 强力型	B.17
HSK Hydraulic Chuck, Power Design.....	B.18
HSK 液压刀柄, 强力型	B.18
BT Hydraulic Chuck, Short.....	B.18
BT 液压刀柄, 超短型	B.18
SK Hydraulic Chuck, Short.....	B.18
SK 液压刀柄, 超短型	B.18
BT Hydraulic Chuck, for Mould.....	B.19
BT 液压刀柄, 模具型	B.19
SK Hydraulic Chuck, for Mould.....	B.20
SK 液压刀柄, 模具型	B.20
HSK Hydraulic Chuck, for Mould.....	B.21
HSK 液压刀柄, 模具型	B.21
SK Hydraulic Chuck, for Grind.....	B.22
SK 液压刀柄, 研磨机专用	B.22
MTB Hydraulic Chuck.....	B.22
莫氏液压刀柄	B.22
Hydraulic Chuck, Module.....	B.23
法兰液压刀柄	B.23
Hydraulic Sealed Collet.....	B.24
液压止水筒夹	B.24
Hydraulic Collet, Coolant.....	B.25
液压筒夹, 通水型	B.25
Hydraulic Collet Set	B.26
液压筒夹套装	B.26



Hydraulic Chuck, Standard

液压刀柄, 标准型

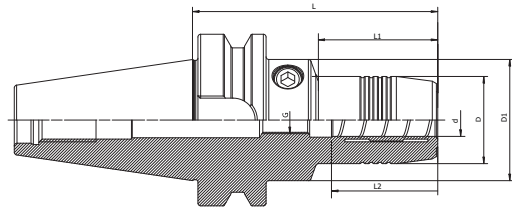
A ↗ ≤0.003	RPM G2.5/25000	AD
---------------	-------------------	----



Size	d	D	D1	L	L1	L2	G
BT30-HY06-70	6	26	45	70	28.5	30	M5
BT30-HY08-70	8	28	45	70	29	30	M6
BT30-HY10-75	10	30	45	75	31	32	M8x1
BT30-HY12-85	12	32	45	85	45	37	M10x1
BT30-HY14-85	14	34	45	85	45	37	M10x1
BT30-HY16-90	16	38	45	90	50	42	M10x1
BT30-HY18-90	18	40	45	90	50	42	M8x1
BT30-HY20-90	20	42	45	90	52	44	M8x1
BT40-HY06-65	6	26	44.5	65	43	30	M5
BT40-HY08-65	8	28	44.5	65	44.5	30	M6
BT40-HY10-65	10	30	44.5	65	44.5	34	M8x1
BT40-HY12-65	12	32	44.5	65	44.5	39	M10x1
BT40-HY14-65	14	34	44.5	65	44.5	39	M10x1
BT40-HY16-65	16	38	50	65	44.5	42	M12x1
BT40-HY18-65	18	40	50	65	44.5	42	M8x1
BT40-HY20-65	20	42	50	65	45.5	44	M10x1
BT40-HY06-90	6	26	44.5	90	43	30	M5
BT40-HY08-90	8	28	44.5	90	43.5	30	M6
BT40-HY10-90	10	30	44.5	90	44	34	M8x1
BT40-HY12-90	12	32	44.5	90	44	39	M10x1
BT40-HY14-90	14	34	44.5	90	44.5	39	M12x1
BT40-HY16-90	16	38	50	90	44.5	42	M12x1
BT40-HY18-90	18	40	50	90	44.5	42	M12x1
BT40-HY20-90	20	42	50	90	45	44	M12x1
BT40-HY25-100	25	57	62	100	54	50	M16x1
BT40-HY32-105	32	64	-	105	-	54	M16x1

Hydraulic Chuck, Standard
液压刀柄, 标准型

A ↗ ≤0.003	RPM G2.5/25000	AD
---------------	-------------------	----



HYDRO

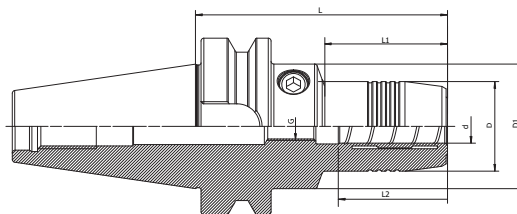
Size	d	D	D1	L	L1	L2	G
BT40-HY06-150	6	26	50	150	102.5	30	M5
BT40-HY08-150	8	28	50	150	103	30	M6
BT40-HY10-150	10	30	50	150	103	34	M8x1
BT40-HY12-150	12	32	50	150	103.5	39	M10x1
BT40-HY14-150	14	34	50	150	104	39	M10x1
BT40-HY16-150	16	38	50	150	104.5	42	M12x1
BT40-HY18-150	18	40	50	150	104.5	42	M12x1
BT40-HY20-150	20	42	50	150	105	44	M16x1
BT40-HY25-150	25	57	62	150	105	50	M16x1
BT40-HY32-150	32	64	-	150	-	54	M16x1
BT40-HY06-200	6	26	44.5	200	152.5	30	M5
BT40-HY08-200	8	28	44.5	200	154	30	M6
BT40-HY10-200	10	30	44.5	200	154	34	M8x1
BT40-HY12-200	12	32	44.5	200	155	39	M10x1
BT40-HY14-200	14	34	44.5	200	155	39	M10x1
BT40-HY16-200	16	38	50	200	156	42	M12x1
BT40-HY18-200	18	40	50	200	156	42	M10x1
BT40-HY20-200	20	42	50	200	155	44	M16x1
BT40-HY25-200	25	57	62	200	157	50	M16x1
BT40-HY32-200	32	64	-	200	-	54	M16x1
BT50-HY06-90	6	26	44.5		34	30	M5
BT50-HY08-90	8	28	44.5	90	34	30	M6
BT50-HY10-90	10	30	44.5	90	34	32	M8x1
BT50-HY12-90	12	32	44.5	90	34	37	M10x1
BT50-HY14-90	14	34	44.5	90	34	39	M10x1
BT50-HY16-90	16	38	50	90	34	42	M12x1
BT50-HY18-90	18	40	50	90	34	42	M12x1
BT50-HY20-90	20	42	50	90	34	44	M16x1
BT50-HY25-105	25	57	70	105	48.5	50	M16x1
BT50-HY32-115	32	64	70	115	59.5	54	M16x1

Hydraulic Chuck, Standard

液压刀柄, 标准型

 A ↗
 ≤0.003

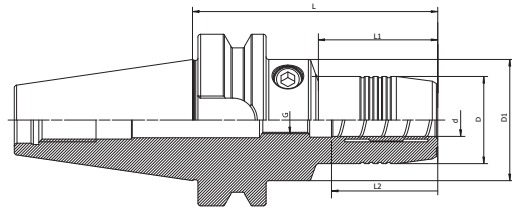
 RPM
 G2.5/25000


 AD


Size	d	D	D1	L	L1	L2	G
BT50-HY06-120	6	26	44.5	120	34	27	M5
BT50-HY08-120	8	28	44.5	120	34	27	M6×1
BT50-HY10-120	10	30	44.5	120	34	32	M8×1
BT50-HY12-120	12	32	44.5	120	34	37	M10×1
BT50-HY14-120	14	34	44.5	120	34	37	M10×1
BT50-HY16-120	16	38	44.5	120	34	42	M12×1
BT50-HY18-120	18	40	44.5	120	34	42	M12×1
BT50-HY20-120	20	42	50	120	34	44	M16×1
BT50-HY06-150	6	26	44.5	150	34	30	M5
BT50-HY08-150	8	28	44.5	150	34	30	M6
BT50-HY10-150	10	30	44.5	150	34	34	M8×1
BT50-HY12-150	12	32	44.5	150	34	37	M10×1
BT50-HY14-150	14	34	44.5	150	34	37	M10×1
BT50-HY16-150	16	38	44.5	150	34	42	M12×1
BT50-HY18-150	18	40	44.5	150	34	42	M12×1
BT50-HY20-150	20	42	50	150	34	44	M16×1
BT50-HY25-150	25	57	63	150	97	48	M16×1
BT50-HY32-150	32	64	70	150	93	54	M16×1

Hydraulic Chuck, Standard
液压刀柄, 标准型

A ↗ ≤0.003	RPM G2.5/25000	AD
---------------	-------------------	----




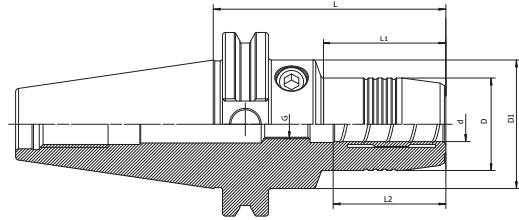
HYDRO

Size	d	D	D1	L	L1	L2	G
BBT40-HY06-90	6	26	44.5	90	43	30	M5
BBT40-HY08-90	8	28	44.5	90	44.5	30	M6
BBT40-HY10-90	10	30	44.5	90	44.5	34	M8x1
BBT40-HY12-90	12	32	44.5	90	44.5	39	M10x1
BBT40-HY14-90	14	34	44.5	90	44.5	39	M10x1
BBT40-HY16-90	16	38	50	90	44.5	42	M12x1
BBT40-HY18-90	18	40	50	90	44.5	42	M12x1
BBT40-HY20-90	20	42	50	90	45.5	44	M10x1
BBT40-HY25-100	25	57	62	100	55.5	50	M16x1
BBT40-HY32-105	32	64	-	105	-	54	M16x1
BBT50-HY06-90	6	26	44.5		34	30	M5
BBT50-HY08-90	8	28	44.5	90	34	30	M6
BBT50-HY10-90	10	30	44.5	90	34	32	M8x1
BBT50-HY12-90	12	32	44.5	90	34	37	M10x1
BBT50-HY14-90	14	34	44.5	90	34	39	M10x1
BBT50-HY16-90	16	38	50	90	34	42	M12x1
BBT50-HY18-90	18	40	50	90	34	42	M12x1
BBT50-HY20-90	20	42	50	90	34	44	M16x1
BBT50-HY25-105	25	57	70	105	48.5	50	M16x1
BBT50-HY32-115	32	64	70	115	59.5	54	M16x1
BBT50-HY06-120	6	26	44.5	120	34	27	M5
BBT50-HY08-120	8	28	44.5	120	34	27	M6x1
BBT50-HY10-120	10	30	44.5	120	34	32	M8x1
BBT50-HY12-120	12	32	44.5	120	34	37	M10x1
BBT50-HY14-120	14	34	44.5	120	34	37	M10x1
BBT50-HY16-120	16	38	44.5	120	34	42	M12x1
BBT50-HY18-120	18	40	44.5	120	34	42	M12x1
BBT50-HY20-120	20	42	50	120	34	44	M16x1

Hydraulic Chuck, Standard


液压刀柄, 标准型

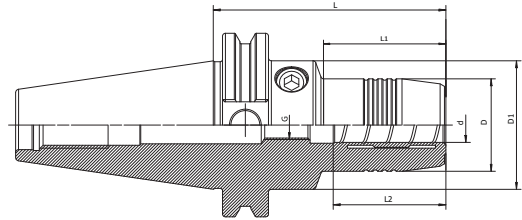
A ↗ ≤0.003	RPM G2.5/25000	 AD/B
---------------	-------------------	---



Size	d	D	D1	L	L1	L2	G
SK30-HY06-70	6	26	45	70	20	27	M5
SK30-HY08-70	8	28	45	70	20	27	M6
SK30-HY10-75	10	30	45	75	21	32	M8x1
SK30-HY12-85	12	32	44.5	85	44	39	M10x1
SK30-HY14-85	14	34	45	85	22	37	M10x1
SK30-HY16-90	16	38	45	90	50	42	M6
SK30-HY18-90	18	40	45	90	50	42	M10x1
SK30-HY20-90	20	42	45	90	50	44	M6
SK40-HY06-65	6	26	44.5	65	42	30	M5
SK40-HY08-65	8	28	49.5	65	30	27	M6
SK40-HY10-65	10	30	49.5	65	31	32	M8x1
SK40-HY12-65	12	32	44.5	65	43	39	M10x1
SK40-HY16-65	16	38	49.5	65	33	42	M12x1
SK40-HY20-65	20	42	49	65	44	44	M10x1
SK40-HY06-80.5	6	26	44.5	80.5	42	30	M5
SK40-HY08-80.5	8	28	49.5	80.5	30	27	M6
SK40-HY10-80.5	10	30	49.5	80.5	31	32	M8x1
SK40-HY12-80.5	12	32	44.5	80.5	43	39	M10x1
SK40-HY16-80.5	16	38	49.5	80.5	33	42	M12x1
SK40-HY20-80.5	20	42	49	80.5	44	44	M10x1
SK40-HY25-80.5	25	57	68	80.5	26	50	M16x1
SK40-HY32-80.5	32	64	80	80.5	24	54	M16x1
SK40-HY06-110	6	26	44.5	110	71.5	30	M5
SK40-HY08-110	8	28	44.5	110	71.5	30	M6
SK40-HY10-110	10	30	44.5	110	72	34	M8x1
SK40-HY12-110	12	32	44.5	110	72.5	39	M10x1
SK40-HY16-110	16	38	50	110	72.5	42	M12x1
SK40-HY20-110	20	42	50	110	73	44	M16x1

Hydraulic Chuck, Standard
液压刀柄, 标准型

A ↗ ≤0.003	RPM G2.5/25000	 AD/B
----------------------	--------------------------	---




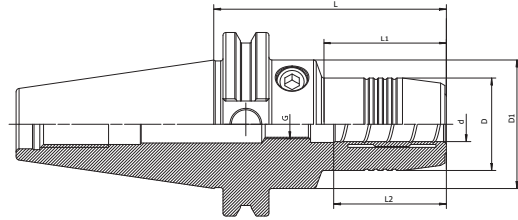
HYDRO

Size	d	D	D1	L	L1	L2	G
SK50-HY06-80.5	6	26	50	80.5	39.5	30	M5
SK50-HY08-80.5	8	28	50	80.5	39.5	30	M6
SK50-HY10-80.5	10	30	50	80.5	40	34	M8x1
SK50-HY12-80.5	12	32	50	80.5	40.5	39	M10x1
SK50-HY16-80.5	16	38	49.5	80.5	40	42	M12x1
SK50-HY20-80.5	20	42	50	80.5	44	44	M16x1
SK50-HY25-80.5	25	57	70	80.5	43	50	M16x1
SK50-HY32-80.5	32	64	70	80.5	44	54	M16x1
SK50-HY06-110	6	26	49.5	110	30	27	M5
SK50-HY08-110	8	28	49.5	110	30	27	M6
SK50-HY10-110	10	30	49.5	110	32	32	M8x1
SK50-HY12-110	12	32	49.5	110	35	37	M10x1
SK50-HY16-110	16	38	49.5	110	40	42	M12x1
SK50-HY20-110	20	42	50	110	44	44	M16x1
SK50-HY06-150	6	26	49.5	150	30	27	M5
SK50-HY08-150	8	28	49.5	150	30	27	M6
SK50-HY10-150	10	30	49.5	150	32	32	M8x1
SK50-HY12-150	12	32	49.5	150	35	37	M10x1
SK50-HY16-150	16	38	49.5	150	40	42	M12x1
SK50-HY20-150	20	42	50	150	44	44	M16x1

Hydraulic Chuck, Standard

液压刀柄, 标准型

A ↗ ≤0.003	RPM G2.5/25000	 AD
---------------	-------------------	---

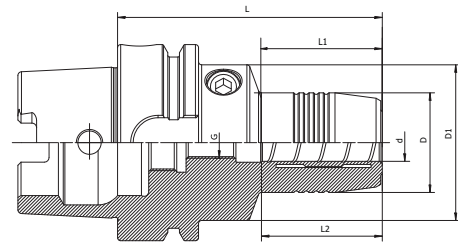


Size	d	D	D1	L	L1	L2	G
CAT40-HY06-80.5	6	26	49.5	80.5	30	27	M5
CAT40-HY08-80.5	8	28	49.5	80.5	30	27	M6
CAT40-HY10-80.5	10	30	49.5	80.5	31	32	M8x1
CAT40-HY12-80.5	12	32	49.5	80.5	31.5	37	M10x1
CAT40-HY16-80.5	16	38	49.5	80.5	33	42	M12x1
CAT40-HY20-80.5	20	42	49.5	80.5	34	42	M16x1
CAT40-HY25-80.5	25	55	66	80.5	22	48	M16x1
CAT40-HY32-80.5	32	63	80	80.5	25.5	55	M16x1
CAT40-HY06-110	6	26	49.5	110	29.5	27	M5
CAT40-HY08-110	8	28	49.5	110	30	27	M6
CAT40-HY10-110	10	30	49.5	110	31	32	M8x1
CAT40-HY12-110	12	32	49.5	110	31.5	37	M10x1
CAT40-HY16-110	16	38	49.5	110	33	42	M12x1
CAT40-HY20-110	20	42	49.5	110	34	42	M16x1
CAT50-HY06-80.5	6	26	49.5	80.5	30	27	M5
CAT50-HY08-80.5	8	28	49.5	80.5	30	27	M6
CAT50-HY10-80.5	10	30	49.5	80.5	32	32	M8x1
CAT50-HY12-80.5	12	32	49.5	80.5	35	37	M10x1
CAT50-HY16-80.5	16	38	49.5	80.5	40	42	M12x1
CAT50-HY20-80.5	20	42	49.5	80.5	40	42	M16x1

Hydraulic Chuck, Standard
液压刀柄, 标准型



A ↗ ≤0.003	RPM G2.5/25000	AD
---------------	-------------------	----

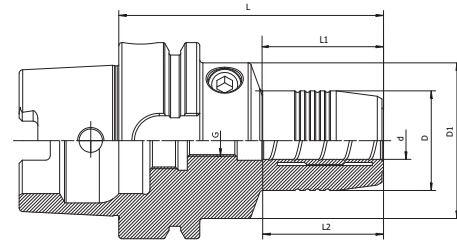
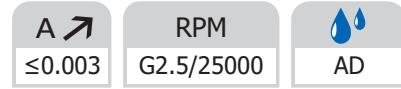


HYDRO

Size	d	D	D1	L	L1	L2	G
HSK32A-HY6-80	6	26	40	80	29	27	M5
HSK32A-HY8-80	8	28	40	80	29	27	M6
HSK32A-HY10-85	10	30	40	85	35	32	M6
HSK32A-HY12-90	12	32	40	90	40	37	M6
HSK40A-HY6-70	6	26	34	70	36	27	M5
HSK40A-HY8-70	8	28	34	70	36	27	M6
HSK40A-HY10-75	10	30	34	75	42	32	M6
HSK40A-HY12-80	12	32	34	80	48	37	M6
HSK50A-HY6-70	6	26	40	70	28	27	M5
HSK50A-HY8-70	8	28	40	70	28	27	M6
HSK50A-HY10-75	10	30	40	75	39	32	M8×1
HSK50A-HY12-85	12	32	40	85	44	37	M10×1
HSK50A-HY14-85	14	34	41	85	43.5	39	M8×1
HSK50A-HY16-90	16	38	53	90	30	42	M12×1
HSK50A-HY18-90	18	40	57	90	30	42	M8×1
HSK50A-HY20-90	20	42	60	90	29	42	M16×1
HSK63A-HY06-70	6	26	50	70	23.5	30	M5
HSK63A-HY08-70	8	28	50	70	24	30	M6
HSK63A-HY10-80	10	30	50	80	34.5	34	M8x1
HSK63A-HY12-85	12	32	50	85	39.5	39	M10x1
HSK63A-HY14-85	14	34	50	85	40	37	M10×1
HSK63A-HY16-90	16	38	50	90	45.5	42	M10×1
HSK63A-HY18-90	18	40	50	90	46	42	M10×1
HSK63A-HY20-90	20	42	50	90	46.5	44	M16×1
HSK63A-HY25-120	25	57	62	120	59	50	M16×1
HSK63A-HY32-125	32	64	-	125	-	54	M16×1

Hydraulic Chuck, Standard

液压刀柄, 标准型

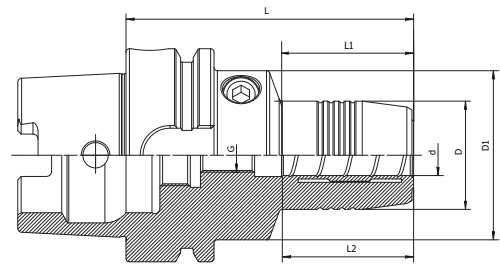


Size	d	D	D1	L	L1	L2	G
HSK63A-HY06-150	6	26	50	150	103.5	30	M5
HSK63A-HY08-150	8	28	50	150	104	30	M6
HSK63A-HY10-150	10	30	50	150	104.5	34	M8x1
HSK63A-HY12-150	12	32	50	150	104.5	39	M10x1
HSK63A-HY14-150	14	34	50	150	105	39	M10x1
HSK63A-HY16-150	16	38	50	150	105.5	42	M12x1
HSK63A-HY18-150	18	40	50	150	106	42	M12x1
HSK63A-HY20-150	20	42	50	150	106	44	M16x1
HSK63A-HY25-150	25	57	62	150	89	50	M16x1
HSK63A-HY32-150	32	64	70	150	88	54	M16x1
HSK63A-HY06-200	6	26	50	200	103.5	30	M5
HSK63A-HY08-200	8	28	50	200	104	30	M6
HSK63A-HY10-200	10	30	50	200	104.5	34	M8x1
HSK63A-HY12-200	12	32	50	200	104.5	39	M10x1
HSK63A-HY14-200	14	34	50	200	105.5	42	M12x1
HSK63A-HY16-200	16	38	50	200	105.5	42	M12x1
HSK63A-HY18-200	18	40	50	200	105.5	42	M12x1
HSK63A-HY20-200	20	42	50	200	106	44	M16x1
HSK63A-HY25-200	25	57	62	200	152	50	M16x1
HSK63A-HY32-200	32	64	70	200	152	54	M16x1
HSK80A-HY12-85	12	32	50	85	40	37	M10x1
HSK80A-HY20-95	20	42	50	95	52	42	M16x1
HSK80A-HY32-125	32	64	75	125	63	55	M16x1
HSK100A-HY06-75	6	26	50	75	25.5	30	M5
HSK100A-HY08-75	8	28	50	75	26	30	M6
HSK100A-HY10-90	10	30	50	90	41.5	34	M8x1
HSK100A-HY12-95	12	32	50	95	47	37	M10x1
HSK100A-HY14-95	14	34	50	95	47	37	M10x1
HSK100A-HY16-100	16	38	50	100	52.5	42	M12x1
HSK100A-HY18-100	18	40	50	100	53	42	M12x1
HSK100A-HY20-105	20	42	60	105	54.5	44	M16x1
HSK100A-HY25-110	25	57	70	110	60	50	M16x1
HSK100A-HY32-110	32	64	70	110	62	54	M16x1

Hydraulic Chuck, Standard
液压刀柄, 标准型



A ↗ ≤0.003	RPM G2.5/25000	AD
----------------------	--------------------------	-----------



Size	d	D	D1	L	L1	L2	G
HSK100A-HY06-150	6	26	50	150	100	30	M5
HSK100A-HY08-150	8	28	50	150	100.5	30	M6
HSK100A-HY10-150	10	30	50	150	101	34	M8x1
HSK100A-HY12-150	12	32	50	150	101.5	39	M10x1
HSK100A-HY14-150	14	34	50	200	105.5	42	M12x1
HSK100A-HY16-150	16	38	50	200	105.5	42	M12x1
HSK100A-HY18-150	18	40	50	200	105.5	42	M12x1
HSK100A-HY20-150	20	42	50	200	106	44	M16x1
HSK100A-HY25-150	25	57	70	150	100	50	M16x1
HSK100A-HY32-150	32	64	70	150	102	54	M16x1
HSK100A-HY06-200	6	26	50	200	103.5	30	M5
HSK100A-HY08-200	8	28	50	200	104	30	M6
HSK100A-HY10-200	10	30	50	200	104.5	34	M8x1
HSK100A-HY12-200	12	32	50	200	104.5	39	M10x1
HSK100A-HY14-200	14	34	50	200	105.5	42	M12x1
HSK100A-HY16-200	16	38	50	200	105.5	42	M12x1
HSK100A-HY18-200	18	40	50	200	105.5	42	M12x1
HSK100A-HY20-200	20	42	50	200	106	44	M16x1
HSK100A-HY25-200	25	57	62	200	152	50	M16x1
HSK100A-HY32-200	32	64	70	200	152	54	M16x1

HYDRO

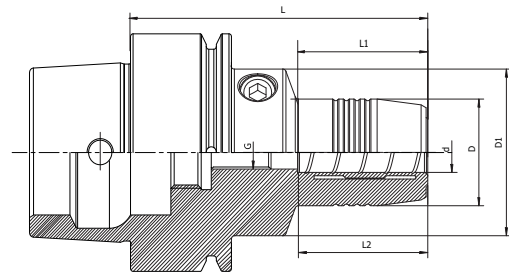
Hydraulic Chuck, Standard

液压刀柄, 标准型

HYDRO



A ↗ ≤0.003	RPM G2.5/25000	AD
---------------	-------------------	----



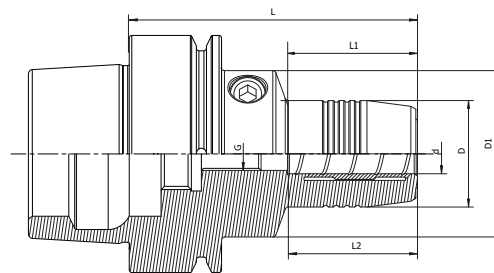
Size	d	D	D1	L	L1	L2	G
HSK40E-HY6-70	6	26	34	70	36	27	M5
HSK40E-HY8-70	8	28	34	70	36	27	M6
HSK40E-HY10-75	10	30	34	75	42	32	M6
HSK40E-HY12-80	12	32	34	80	48	37	M6
HSK50E-HY6-70	6	26	40	70	28	27	M5
HSK50E-HY8-70	8	28	40	70	28	27	M6
HSK50E-HY10-75	10	30	40	75	34	32	M8x1
HSK50E-HY12-85	12	32	40	85	44	37	M10x1
HSK50E-HY16-90	16	38	53	90	30	42	M12x1
HSK50E-HY20-90	20	42	60	90	29	42	M16x1

Hydraulic Chuck, Standard

液压刀柄, 标准型



A ↗ ≤0.003	RPM G2.5	AD
---------------	-------------	----

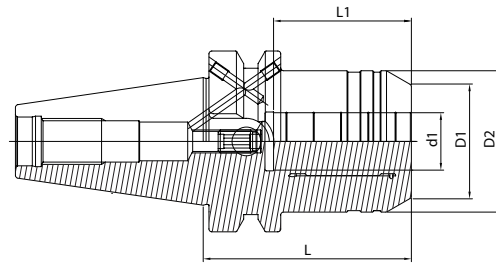


Size	d	D	D1	L	L1	L2	G
HSK63F-HY06-70	6	26	50	70	24	27	M5
HSK63F-HY08-70	8	28	50	70	25	27	M6
HSK63F-HY10-80	10	30	50	80	35	32	M8x1
HSK63F-HY12-85	12	32	50	85	40	37	M10x1
HSK63F-HY14-85	14	34	50	85	40	37	M10x1
HSK63F-HY16-90	16	38	50	90	46	42	M12x1
HSK63F-HY18-90	18	40	50	90	47	42	M12x1
HSK63F-HY20-90	20	42	50	90	48	42	M16x1
HSK63F-HY25-120	25	57	63	120	59	48	M16x1
HSK63F-HY32-125	32	64	75	125	63	55	M16x1

Hydraulic Chuck, Power Design
液压刀柄, 强力型



A ↗ ≤0.003	RPM G2.5/25000	AD
---------------	-------------------	----



Size	d1	D1	D2	L	L1	G
BT40-HYP12-50	12	32	42	50	41	M8x1
BT40-HYP20-64.5	20	38	49.5	64.5	48	M8x1
BT50-HYP20-64.5	20	38	49.5	64.5	48	M8x1
BT50-HYP32-81	32	58.5	72	81	57	M8x1

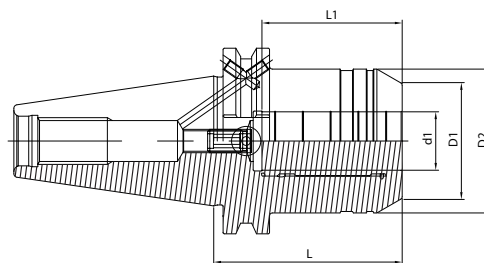
HYDRO

Tool Holder DIN 69871

Hydraulic Chuck, Power Design
液压刀柄, 强力型



A ↗ ≤0.003	RPM G2.5/25000	AD
---------------	-------------------	----



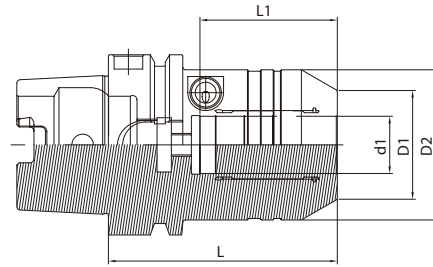
Size	d1	D1	D2	L	L1	G
SK40-HYP12-50	12	32	42	50	41	M8x1
SK40-HYP20-64.5	20	38	49.5	64.5	48	M8x1
SK50-HYP20-64.5	20	38	49.5	64.5	48	M8x1
SK50-HYP32-81	32	58.5	72	81	57	M8x1

Hydraulic Chuck, Power Design

液压刀柄, 强力型

HYDRO


A ↗ ≤0.003	RPM G2.5/25000	AD
---------------	-------------------	----



Size	d1	D1	D2	L	L1	G
HSK63A-HYP12-80	12	32	42	80	41	M8x1
HSK63A-HYP20-80	20	38	52.5	80	48	M8x1
HSK100A-HYP20-90	20	38	52.5	90	48	M8x1
HSK100A-HYP32-100	32	58.5	72	100	57	M8x1

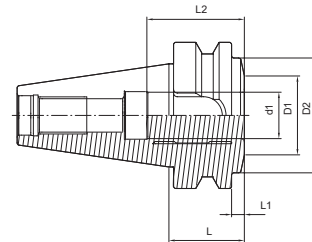
Tool Holder JIS B 6339

Hydraulic Chuck, Short

液压刀柄, 超短型



A ↗ ≤0.003	RPM G2.5/25000	AD
---------------	-------------------	----



Size	d1	D1	D2	L	L1	L2	G
BT40-HY20-32.5	20	34	49.5	32.5	5.5	42	-

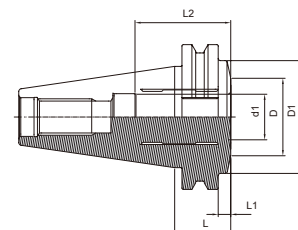
Tool Holder DIN 69871

Hydraulic Chuck, Short

液压刀柄, 超短型



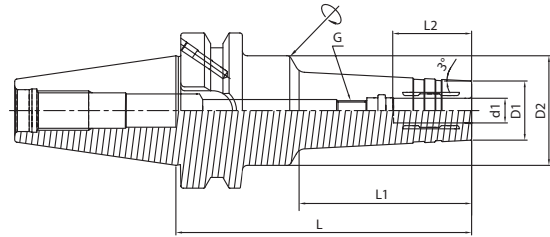
A ↗ ≤0.003	RPM G2.5/25000	AD
---------------	-------------------	----



Size	d1	D1	D2	L	L1	L2	G
SK40-HY20-24.6	20	34	49.5	24.6	5.5	42	-
SK50-HY32-30.9	32	44.5	70.5	30.9	11.85	55	-

Hydraulic Chuck, for Mould
液压刀柄, 模具型

A ↗ ≤0.003	RPM G2.5/25000	AD
----------------------	--------------------------	-----------



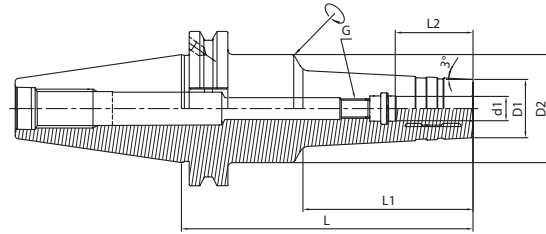
HYDRO

Size	d1	D1	D2	L	L1	L2	G
BT40-HYM6-120	6	20	44.5	120	70	27	M5
BT40-HYM6-150	6	20	44.5	150	100	27	M5
BT40-HYM8-120	8	22	44.5	120	70	27	M6
BT40-HYM8-150	8	22	44.5	150	100	27	M6
BT40-HYM10-120	10	24	44.5	120	70	32	M8×1
BT40-HYM10-150	10	24	44.5	150	100	32	M8×1
BT40-HYM12-120	12	25	44.5	120	70	37	M10×1
BT40-HYM12-150	12	25	44.5	150	100	37	M10×1
BT40-HYM16-120	16	32	44.5	120	70	42	M12×1
BT40-HYM16-150	16	32	44.5	150	100	42	M12×1
BT40-HYM20-120	20	34	43.8	120	93	42	M16×1
BT40-HYM20-150	20	34	46.9	150	123	42	M16×1
BT50-HYM6-150	6	20	50	150	90	27	M5
BT50-HYM8-150	8	22	50	150	90	27	M6
BT50-HYM10-150	10	24	50	150	90	32	M8×1
BT50-HYM12-150	12	25	50	150	90	37	M10×1
BT50-HYM16-150	16	32	50	150	90	42	M12×1
BT50-HYM20-150	20	34	50	150	90	42	M16×1

Hydraulic Chuck, for Mould

液压刀柄, 模具型

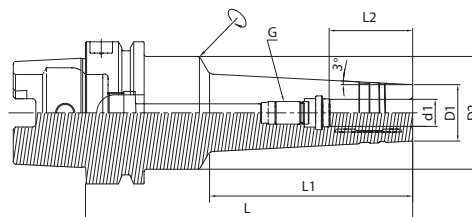
A ↗ ≤0.003	RPM G2.5/25000	AD
---------------	-------------------	----



Size	d1	D1	D2	L	L1	L2	G
SK40-HYM6-120	6	20	49.5	120	70	27	M5
SK40-HYM6-150	6	20	49.5	150	100	27	M5
SK40-HYM8-120	8	22	49.5	120	70	27	M6
SK40-HYM8-150	8	22	49.5	150	100	27	M6
SK40-HYM10-120	10	24	44.5	120	70	32	M8×1
SK40-HYM10-150	10	24	44.5	150	100	32	M8×1
SK40-HYM12-120	12	25	44.5	120	70	37	M10×1
SK40-HYM12-150	12	25	44.5	150	100	37	M10×1
SK40-HYM16-120	16	32	49.5	120	70	42	M12×1
SK40-HYM16-150	16	32	49.5	150	100	42	M12×1
SK40-HYM20-120	20	34	49.5	120	70	42	M16×1
SK40-HYM20-150	20	34	49.5	150	100	42	M16×1
SK50-HYM6-150	6	20	44.5	150	100	27	M5
SK50-HYM8-150	8	22	44.5	150	100	27	M6
SK50-HYM10-150	10	24	44.5	150	100	32	M8×1
SK50-HYM12-150	12	25	44.5	150	100	37	M10×1
SK50-HYM16-150	16	32	44.5	150	100	42	M12×1
SK50-HYM20-150	20	34	44.5	150	100	42	M16×1

Hydraulic Chuck, for Mould
液压刀柄, 模具型

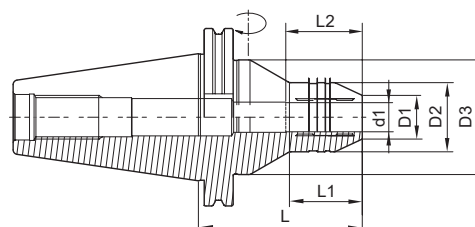
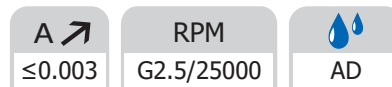
A ↗ ≤0.003	RPM G2.5/25000	AD
---------------	-------------------	----



Size	d1	D1	D2	L	L1	L2	G
HSK63A-HYM6-145	6	20	50	145	90	27	M5
HSK63A-HYM8-145	8	22	50	145	90	27	M6
HSK63A-HYM10-145	10	24	50	145	90	32	M8×1
HSK63A-HYM12-145	12	25	50	145	90	37	M10×1
HSK63A-HYM16-145	16	32	50	145	90	42	M12×1
HSK63A-HYM20-145	20	34	50	145	90	42	M16×1
HSK100A-HYM6-150	6	20	50	150	90	27	M5
HSK100A-HYM8-150	8	22	50	150	90	27	M6
HSK100A-HYM10-150	10	24	50	150	90	32	M8×1
HSK100A-HYM12-150	12	25	50	150	90	37	M10×1
HSK100A-HYM16-150	16	32	50	150	90	42	M12×1
HSK100A-HYM20-150	20	34	50	150	90	42	M16×1

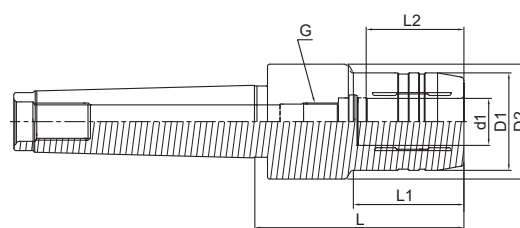
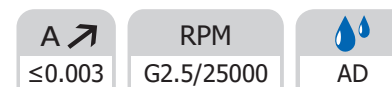
HYDRO

Hydraulic Chuck, for Grind 液压刀柄, 研磨机专用

HYDRO


Size	d1	D1	D2	D3	L	L1	L2
SK50-HYG6-90	6	14	30	63	90	30	27
SK50-HYG8-90	8	16	30	63	90	30	27
SK50-HYG10-90	10	18	30	63	90	30	32
SK50-HYG12-90	12	21	33	63	90	35	37
SK50-HYG14-90	14	22	35	63	90	35	37
SK50-HYG16-90	16	24	38	63	90	40	42
SK50-HYG18-90	18	26	40	63	90	40	42
SK50-HYG20-110	20	29	42	63	110	40	42
SK50-HYG25-110	25	34	50	70	110	45	48
SK50-HYG32-110	32	42	56	80	110	50	55

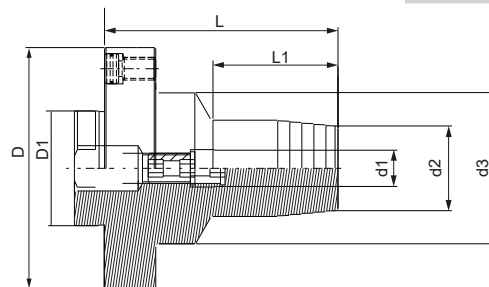
MTB Hydraulic Chuck 莫氏液压刀柄



Size	d1	D1	D2	L	L1	L2	G
MTB4-HY20-90	20	42	49.5	90	47.5	42	M16×1
MTB4-HY32-90	32	72	72	90	-	55	-
MTB5-HY20-90	20	42	49.5	90	47.5	42	M16×1
MTB5-HY32-90	32	72	72	90	-	55	-

Hydraulic Chuck, Module 法兰液压刀柄

A ↗
≤0.003

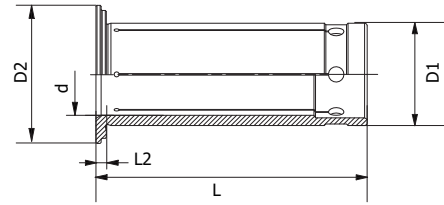


Size	D	D1	d1	d2	d3	L1	L
MOD60-HY06-80	60	53	06	26	40	30	80
MOD60-HY08-80	60	53	08	28	40	30	80
MOD60-HY10-80	60	53	10	30	40	35	80
MOD60-HY12-80	60	53	12	32	40	40	80
MOD70-HY06-80	70	53	06	26	40	30	80
MOD70-HY08-80	70	53	08	28	40	30	80
MOD70-HY10-80	70	53	10	30	40	35	80
MOD70-HY12-80	70	53	12	32	40	40	80
MOD80-HY06-80	80	63	06	26	50	24	80
MOD80-HY08-80	80	63	08	28	50	25	80
MOD80-HY10-80	80	63	10	30	50	35	80
MOD80-HY12-80	80	63	12	32	50	44.5	80
MOD80-HY16-80	80	63	16	38	50	46	80
MOD80-HY20-80	80	63	20	42	50	47.5	80
MOD100-HY12-80	100	82	12	35	50	44.5	80
MOD100-HY16-80	100	82	16	38	50	46	80
MOD100-HY20-80	100	82	20	42	50	47.5	80
MOD100-HY25-90	100	82	25	57	63	59	90
MOD117-HY32-100	117	-	32	-	-	-	100

HYDRO

Hydraulic Sealed Collet 液压止水筒夹

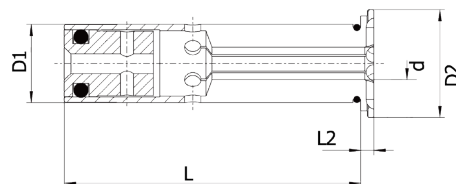
A ↗
≤0.003



Size	d	D1	D2	L	L2
HY12-03	3	12	18	47	2
HY12-04	4	12	18	47	2
HY12-05	5	12	18	47	2
HY12-06	6	12	18	47	2
HY12-07	7	12	18	47	2
HY12-08	8	12	18	47	2
HY20-03	3	20	27	52.5	2
HY20-04	4	20	27	52.5	2
HY20-05	5	20	27	52.5	2
HY20-06	6	20	27	52.5	2
HY20-07	7	20	27	52.5	2
HY20-08	8	20	27	52.5	2
HY20-09	9	20	27	52.5	2
HY20-10	10	20	27	52.5	2
HY20-11	11	20	27	52.5	2
HY20-12	12	20	27	52.5	2
HY20-13	13	20	27	52.5	2
HY20-14	14	20	27	52.5	2
HY20-15	15	20	27	52.5	2
HY20-16	16	20	27	52.5	2
HY32-06	6	32	39	63.5	3
HY32-08	8	32	39	63.5	3
HY32-10	10	32	39	63.5	3
HY32-12	12	32	39	63.5	3
HY32-14	14	32	39	63.5	3
HY32-16	16	32	39	63.5	3
HY32-18	18	32	39	63.5	3
HY32-20	20	32	39	63.5	3
HY32-25	25	32	39	63.5	3

Hydraulic Collet, Coolant 液压筒夹, 通水型

A ↗
≤0.003



Size	d	D1	D2	L	L2
HY12-03K	3	12	18	47	2
HY12-04K	4	12	18	47	2
HY12-05K	5	12	18	47	2
HY12-06K	6	12	18	47	2
HY12-07K	7	12	18	47	2
HY12-08K	8	12	18	47	2
HY20-03K	3	20	27	52.5	2
HY20-04K	4	20	27	52.5	2
HY20-05K	5	20	27	52.5	2
HY20-06K	6	20	27	52.5	2
HY20-07K	7	20	27	52.5	2
HY20-08K	8	20	27	52.5	2
HY20-09K	9	20	27	52.5	2
HY20-10K	10	20	27	52.5	2
HY20-11K	11	20	27	52.5	2
HY20-12K	12	20	27	52.5	2
HY20-13K	13	20	27	52.5	2
HY20-14K	14	20	27	52.5	2
HY20-15K	15	20	27	52.5	2
HY20-16K	16	20	27	52.5	2
HY32-06K	6	32	39	63.5	3
HY32-08K	8	32	39	63.5	3
HY32-10K	10	32	39	63.5	3
HY32-12K	12	32	39	63.5	3
HY32-14K	14	32	39	63.5	3
HY32-16K	16	32	39	63.5	3
HY32-18K	18	32	39	63.5	3
HY32-20K	20	32	39	63.5	3
HY32-25K	25	32	39	63.5	3

HYDRO

Hydraulic Collet Set

液压刀柄套装

HYDRO


Size	Hydraulic chuck	Hydraulic Collet	Collet Quantity	key Size
BT40-HY20-5 PCS	BT40-HY20-90	HY20-6.8.10.12.16	5pcs	5L
SK40-HY20-5 PCS	SK40-HY20-80.5	HY20-6.8.10.12.16	5pcs	5L
HSK63A-HY20-5 PCS	HSK63A-HY20-90	HY20-6.8.10.12.16	5pcs	5L