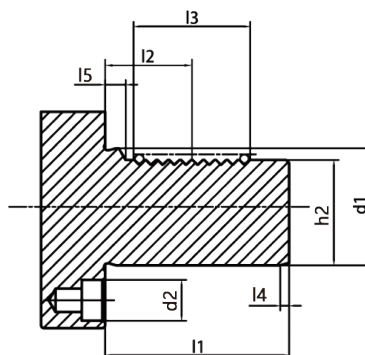
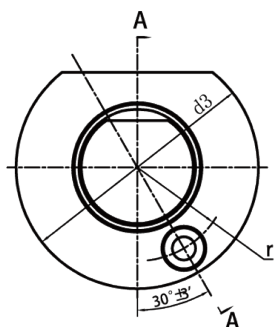


VDI

TOOL HOLDERS

VDI Taper Standard

VDI 锥柄标准



| d1 H6 | h1 max | d2 | d3 | h2 ±0.1 | r ±0.02 | l1 max | l2 ±0.05 | l3 min | l4 max | l5 |
|----------|-----------|----|-----|------------|------------|-----------|-------------|-----------|-----------|-----|
| 16 | 12 | 8 | 40 | 15.0 | 14.5 | 32 | 12.7 | 16 | 2 | 3.5 |
| 20 | 16 | 10 | 50 | 18.0 | 18.0 | 40 | 21.7 | 24 | 2 | 7.0 |
| 25 | 16 | 10 | 58 | 23.5 | 21.0 | 48 | 21.7 | 24 | 2 | 7.0 |
| 30 | 20 | 14 | 68 | 27.0 | 25.0 | 55 | 29.7 | 40 | 2 | 7.0 |
| 40 | 25 | 14 | 83 | 36.0 | 32.0 | 63 | 29.7 | 40 | 3 | 7.0 |
| 50 | 32 | 16 | 98 | 45.0 | 37.0 | 78 | 35.7 | 48 | 3 | 8.0 |
| 60 | 32 | 16 | 123 | 55 | 48 | 94 | 43.7 | 56 | 4 | 10 |
| 80 | 40 | 20 | 158 | 72 | 65 | 124 | 49.7 | 80 | 4 | 10 |

VDI TOOLING SYSTEM

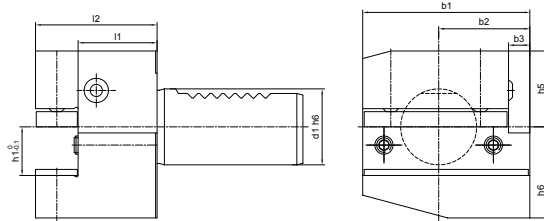
VDI 工具系统

| | |
|---|--|
| Radial Holder Form B1I.04 | Cutting Off Tool Holder Left Height AdjustableI.31 |
| 短型横向右刀夹.....I.04 | 短型横向切刀左刀夹I.31 |
| Radial Holder Form B2 I.05 | Cutting Off Tool Holder Inverted Right Height AdjustableI.32 |
| 短型横向左刀夹.....I.05 | 短型横向切刀反切右刀夹.....I.32 |
| Radial Holder Form B3.....I.06 | Cutting Off Tool Holder Inverted Left Height AdjustableI.32 |
| 短型横向反切右刀夹.....I.06 | 短型横向切刀反切左刀夹I.32 |
| Radial Holder Form B4.....I.07 | Protection Plug Form Z2.....I.33 |
| 短型横向反切左刀夹I.07 | 保护塞.....I.33 |
| Radial Holder Form B5.....I.08 | |
| 长型横向右刀夹.....I.08 | |
| Radial Holder Form B6.....I.09 | |
| 长型横向左刀夹.....I.09 | |
| Radial Holder Form B7.....I.10 | |
| 长型横向反切右刀夹I.10 | |
| Radial Holder Form B8.....I.11 | |
| 长型横向反切左刀夹.....I.11 | |
| Axial Holder Form C1.....I.12 | |
| 纵向右刀夹.....I.12 | |
| Axial Holder Form C2I.13 | |
| 纵向左刀夹I.13 | |
| Axial Holder Form C3I.14 | |
| 纵向反切右刀夹.....I.14 | |
| Axial Holder Form C4.....I.15 | |
| 纵向反切左刀夹.....I.15 | |
| Rectangular Holder Form D1I.16 | |
| 多座刀夹.....I.16 | |
| Rectangular Holder Form D2I.17 | |
| 多座反切刀夹I.17 | |
| Boring Holder Form E1.....I.18 | |
| 可转位浅孔钻头夹I.18 | |
| Boring Holder Form E2I.21 | |
| 镗孔刀夹I.21 | |
| Boring Bar Holder Form E2SI.26 | |
| 镗孔刀夹, 开槽型I.26 | |
| ER Collet Chuck Form E4I.27 | |
| ER 刀柄I.27 | |
| Double Boring Bar Holder, Right.....I.28 | |
| 右侧双搪孔刀柄.....I.28 | |
| Double Boring Bar Holder, Left.....I.28 | |
| 左侧双搪孔刀柄I.28 | |
| Morse Taper Adapter Form F.....I.29 | |
| 带扁尾莫氏刀柄.....I.29 | |
| Rectangular Blank Form A1I.30 | |
| 方形基础柄I.30 | |
| Round Blank FormI.30 | |
| 圆形基础柄I.30 | |
| Cutting Off Tool Holder Right Height AdjustableI.31 | |
| 短型横向切刀右刀夹I.31 | |



VDI

Radial Holder Form B1 Right, Short 短型横向右刀夹



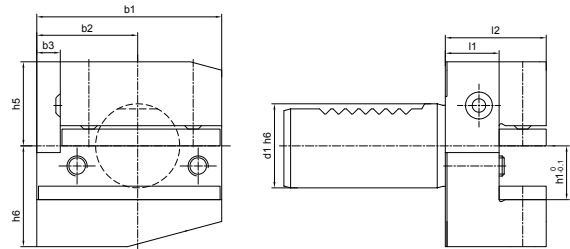
Metric

| Size | d1 | b1 | b2 | b3 | h1 | h5 | h6 | l1 | l2 |
|-------------|----|-----|------|------|-------|------|------|----|----|
| B1-16x12x24 | 16 | 42 | 23 | 5 | 12 | 20 | 22 | 13 | 24 |
| B1-16x12x34 | 16 | 42 | 23 | 5 | 12 | 20 | 22 | 23 | 34 |
| B1-20x16x30 | 20 | 55 | 30 | 7 | 16/12 | 25 | 30 | 16 | 30 |
| B1-20x16x40 | 20 | 55 | 30 | 7 | 16/12 | 25 | 30 | 26 | 40 |
| B1-25x16x30 | 25 | 55 | 30 | 7 | 16/12 | 25 | 30 | 16 | 30 |
| B1-25x16x40 | 25 | 55 | 30 | 7 | 16/12 | 25 | 30 | 26 | 40 |
| B1-30x20x40 | 30 | 70 | 35 | 10 | 20/16 | 28 | 38 | 22 | 40 |
| B1-30x20x60 | 30 | 70 | 35 | 10 | 20/16 | 28 | 38 | 42 | 60 |
| B1-40x25x44 | 40 | 85 | 42.5 | 12.5 | 25/20 | 32.5 | 48 | 22 | 44 |
| B1-50x32x55 | 50 | 100 | 50 | 16 | 32/25 | 35 | 60 | 30 | 55 |
| B1-60x32x60 | 60 | 125 | 62.5 | 16 | 32/25 | 42.5 | 62.5 | 30 | 60 |
| B1-80x40x75 | 80 | 160 | 80 | 20 | 40/32 | 55 | 80 | 40 | 75 |

Inch

| Size | d1 | b1 | b2 | b3 | h1 | h5 | h6 | l1 | l2 |
|-----------------|----|-----|------|------|--------|------|------|----|----|
| B1-20x5/8"x30 | 20 | 55 | 30 | 7 | 5/8" | 25 | 30 | 16 | 30 |
| B1-30x3/4"x40 | 30 | 70 | 35 | 10 | 3/4" | 28 | 38 | 22 | 40 |
| B1-40x1"x44 | 40 | 85 | 42.5 | 12.5 | 1" | 32.5 | 48 | 22 | 44 |
| B1-50x1-1/4"x55 | 50 | 100 | 50 | 16 | 1-1/4" | 35 | 60 | 30 | 55 |
| B1-60x1-1/4"x60 | 60 | 125 | 62.5 | 16 | 1-1/4" | 42.5 | 62.5 | 30 | 60 |

Radial Holder Form B2 Left, Short 短型横向左刀夹



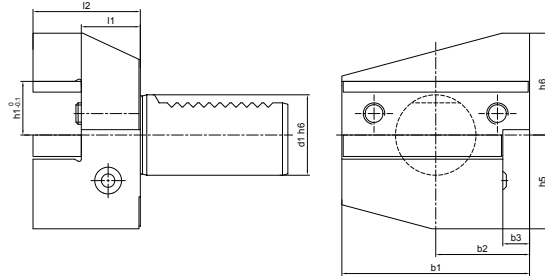
Metric

| Size | d1 | b1 | b2 | b3 | h1 | h5 | h6 | l1 | l2 |
|-------------|----|-----|------|------|-------|------|------|----|----|
| B2-16x12x24 | 16 | 42 | 23 | 5 | 12 | 20 | 22 | 13 | 24 |
| B2-16x12x34 | 16 | 42 | 23 | 5 | 12 | 20 | 22 | 23 | 34 |
| B2-20x16x30 | 20 | 55 | 30 | 7 | 16/12 | 25 | 30 | 16 | 30 |
| B2-20x16x40 | 20 | 55 | 30 | 7 | 16/12 | 25 | 30 | 26 | 40 |
| B2-25x16x30 | 25 | 55 | 30 | 7 | 16/12 | 25 | 30 | 16 | 30 |
| B2-25x16x40 | 25 | 55 | 30 | 7 | 16/12 | 25 | 30 | 26 | 40 |
| B2-30x20x40 | 30 | 70 | 35 | 10 | 20/16 | 28 | 38 | 22 | 40 |
| B2-30x20x60 | 30 | 70 | 35 | 10 | 20/16 | 28 | 38 | 42 | 60 |
| B2-40x25x44 | 40 | 85 | 42.5 | 12.5 | 25/20 | 32.5 | 48 | 22 | 44 |
| B2-50x32x55 | 50 | 100 | 50 | 16 | 32/25 | 35 | 60 | 30 | 55 |
| B2-60x32x60 | 60 | 125 | 62.5 | 16 | 32/25 | 42.5 | 62.5 | 30 | 60 |
| B2-80x40x75 | 80 | 160 | 80 | 20 | 40/32 | 55 | 80 | 40 | 75 |

Inch

| Size | d1 | b1 | b2 | b3 | h1 | h5 | h6 | l1 | l2 |
|-----------------|----|-----|------|------|--------|------|------|----|----|
| B2-20x5/8"x30 | 20 | 55 | 30 | 7 | 5/8" | 25 | 30 | 16 | 30 |
| B2-30x3/4"x40 | 30 | 70 | 35 | 10 | 3/4" | 28 | 38 | 22 | 40 |
| B2-40x1"x44 | 40 | 85 | 42.5 | 12.5 | 1" | 32.5 | 48 | 22 | 44 |
| B2-50x1-1/4"x55 | 50 | 100 | 50 | 16 | 1-1/4" | 35 | 60 | 30 | 55 |
| B2-60x1-1/4"x60 | 60 | 125 | 62.5 | 16 | 1-1/4" | 42.5 | 62.5 | 30 | 60 |

Radial Holder Form B3 Inverted Right, Short 短型横向反切右刀夹



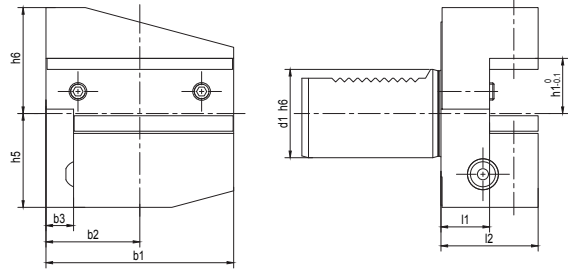
Metric

| Size | d1 | b1 | b2 | b3 | h1 | h5 | h6 | l1 | l2 |
|-------------|----|-----|------|------|-------|------|------|----|----|
| B3-16x12x24 | 16 | 42 | 23 | 5 | 12 | 20 | 22 | 13 | 24 |
| B3-16x12x34 | 16 | 42 | 23 | 5 | 12 | 20 | 22 | 23 | 34 |
| B3-20x16x30 | 20 | 55 | 30 | 7 | 16/12 | 25 | 30 | 16 | 30 |
| B3-20x16x40 | 20 | 55 | 30 | 7 | 16/12 | 25 | 30 | 26 | 40 |
| B3-25x16x30 | 25 | 55 | 30 | 7 | 16/12 | 25 | 30 | 16 | 30 |
| B3-25x16x40 | 25 | 55 | 30 | 7 | 16/12 | 25 | 30 | 26 | 40 |
| B3-30x20x40 | 30 | 70 | 35 | 10 | 20/16 | 35 | 38 | 22 | 40 |
| B3-30x20x60 | 30 | 70 | 35 | 10 | 20/16 | 35 | 38 | 42 | 60 |
| B3-40x25x44 | 40 | 85 | 42.5 | 12.5 | 25/20 | 42.5 | 48 | 22 | 44 |
| B3-50x32x55 | 50 | 100 | 50 | 16 | 32/25 | 50 | 60 | 30 | 55 |
| B3-60x32x60 | 60 | 125 | 62.5 | 16 | 32/25 | 62.5 | 62.5 | 30 | 60 |
| B3-80x40x75 | 80 | 160 | 80 | 20 | 40/32 | 80 | 80 | 40 | 75 |

Inch

| Size | d1 | b1 | b2 | b3 | h1 | h5 | h6 | l1 | l2 |
|-----------------|----|-----|------|------|--------|------|------|----|----|
| B3-20x5/8"x30 | 20 | 55 | 30 | 7 | 5/8" | 25 | 30 | 16 | 30 |
| B3-30x3/4"x40 | 30 | 70 | 35 | 10 | 3/4" | 35 | 38 | 22 | 40 |
| B3-40x1"x44 | 40 | 85 | 42.5 | 12.5 | 1" | 42.5 | 48 | 22 | 44 |
| B3-50x1-1/4"x55 | 50 | 100 | 50 | 16 | 1-1/4" | 50 | 60 | 30 | 55 |
| B3-60x1-1/4"x60 | 60 | 125 | 62.5 | 16 | 1-1/4" | 62.5 | 62.5 | 30 | 60 |

Radial Holder Form B4 Inverted Left, Short 短型横向反切左刀夹



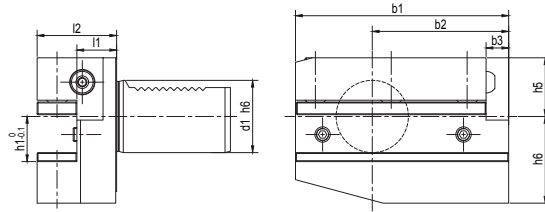
Metric

| Size | d1 | b1 | b2 | b3 | h1 | h5 | h6 | l1 | l2 |
|-------------|----|-----|------|------|-------|------|------|----|----|
| B4-16x12x24 | 16 | 42 | 23 | 5 | 12 | 20 | 22 | 13 | 24 |
| B4-16x12x34 | 16 | 42 | 23 | 5 | 12 | 20 | 22 | 23 | 34 |
| B4-20x16x30 | 20 | 55 | 30 | 7 | 16/12 | 25 | 30 | 16 | 30 |
| B4-20x16x40 | 20 | 55 | 30 | 7 | 16/12 | 25 | 30 | 26 | 40 |
| B4-25x16x30 | 25 | 55 | 30 | 7 | 16/12 | 25 | 30 | 16 | 30 |
| B4-25x16x40 | 25 | 55 | 30 | 7 | 16/12 | 25 | 30 | 26 | 40 |
| B4-30x20x40 | 30 | 70 | 35 | 10 | 20/16 | 35 | 38 | 22 | 40 |
| B4-30x20x60 | 30 | 70 | 35 | 10 | 20/16 | 35 | 38 | 42 | 60 |
| B4-40x25x44 | 40 | 85 | 42.5 | 12.5 | 25/20 | 42.5 | 48 | 22 | 44 |
| B4-50x32x55 | 50 | 100 | 50 | 16 | 32/25 | 50 | 60 | 30 | 55 |
| B4-60x32x60 | 60 | 125 | 62.5 | 16 | 32/25 | 62.5 | 62.5 | 30 | 60 |
| B4-80x40x75 | 80 | 160 | 80 | 20 | 40/32 | 80 | 80 | 40 | 75 |

Inch

| Size | d1 | b1 | b2 | b3 | h1 | h5 | h6 | l1 | l2 |
|-----------------|----|-----|------|------|--------|------|------|----|----|
| B4-20x5/8"x30 | 20 | 55 | 30 | 7 | 5/8" | 25 | 30 | 16 | 30 |
| B4-30x3/4"x40 | 30 | 70 | 35 | 10 | 3/4" | 35 | 38 | 22 | 40 |
| B4-40x1"x44 | 40 | 85 | 42.5 | 12.5 | 1" | 42.5 | 48 | 22 | 44 |
| B4-50x1-1/4"x55 | 50 | 100 | 50 | 16 | 1-1/4" | 50 | 60 | 30 | 55 |
| B4-60x1-1/4"x60 | 60 | 125 | 62.5 | 16 | 1-1/4" | 62.5 | 62.5 | 30 | 60 |

Radial Holder Form B5 Right, Long 长型横向右刀夹



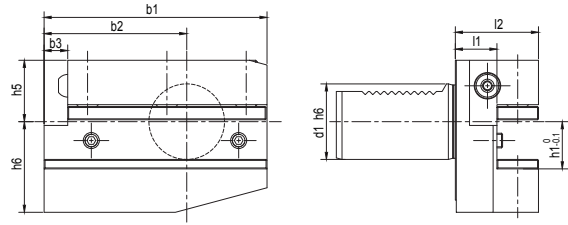
Metric

| Size | d1 | b1 | b2 | b3 | h1 | h5 | h6 | l1 | l2 |
|-------------|----|-----|------|------|-------|------|------|----|----|
| B5-16x12x24 | 16 | 58 | 39 | 5 | 12 | 20 | 22 | 13 | 24 |
| B5-16x12x34 | 16 | 58 | 39 | 5 | 12 | 20 | 22 | 23 | 34 |
| B5-20x16x30 | 20 | 75 | 50 | 7 | 16/12 | 25 | 30 | 16 | 30 |
| B5-20x16x40 | 20 | 75 | 50 | 7 | 16/12 | 25 | 30 | 26 | 40 |
| B5-25x16x30 | 25 | 75 | 50 | 7 | 16/12 | 25 | 30 | 16 | 30 |
| B5-25x16x40 | 25 | 75 | 50 | 7 | 16/12 | 25 | 30 | 26 | 40 |
| B5-30x20x40 | 30 | 100 | 65 | 10 | 20/16 | 28 | 38 | 22 | 40 |
| B5-30x20x60 | 30 | 100 | 65 | 10 | 20/16 | 28 | 38 | 42 | 60 |
| B5-40x25x44 | 40 | 118 | 75.5 | 12.5 | 25/20 | 32.5 | 48 | 22 | 44 |
| B5-50x32x55 | 50 | 130 | 80 | 16 | 32/25 | 35 | 60 | 30 | 55 |
| B5-60x32x60 | 60 | 145 | 82.5 | 16 | 32/25 | 42.5 | 62.5 | 30 | 60 |
| B5-80x40x75 | 80 | 190 | 110 | 20 | 40/32 | 55 | 80 | 40 | 75 |

Inch

| Size | d1 | b1 | b2 | b3 | h1 | h5 | h6 | l1 | l2 |
|-----------------|----|-----|------|------|--------|------|------|----|----|
| B5-20x5/8"x30 | 20 | 75 | 50 | 7 | 5/8" | 25 | 30 | 16 | 30 |
| B5-30x3/4"x40 | 30 | 100 | 65 | 10 | 3/4" | 28 | 38 | 22 | 40 |
| B5-40x1"x44 | 40 | 118 | 75.5 | 12.5 | 1" | 32.5 | 48 | 22 | 44 |
| B5-50x1-1/4"x55 | 50 | 130 | 80 | 16 | 1-1/4" | 35 | 60 | 30 | 55 |
| B5-60x1-1/4"x60 | 60 | 145 | 82.5 | 16 | 1-1/4" | 42.5 | 62.5 | 30 | 60 |

Radial Holder Form B6 Left, Long 长型横向左刀夹



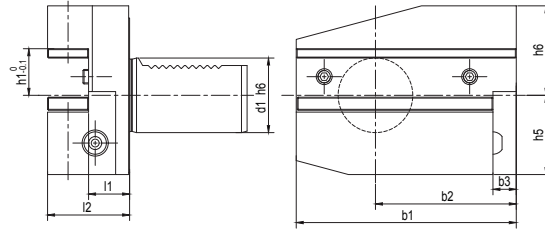
Metric

| Size | d1 | b1 | b2 | b3 | h1 | h5 | h6 | l1 | l2 |
|-------------|----|-----|------|------|-------|------|------|----|----|
| B6-16x12x24 | 16 | 58 | 39 | 5 | 12 | 20 | 22 | 13 | 24 |
| B6-16x12x34 | 16 | 58 | 39 | 5 | 12 | 20 | 22 | 23 | 34 |
| B6-20x16x30 | 20 | 75 | 50 | 7 | 16/12 | 25 | 30 | 16 | 30 |
| B6-20x16x40 | 20 | 75 | 50 | 7 | 16/12 | 25 | 30 | 26 | 40 |
| B6-25x16x30 | 25 | 75 | 50 | 7 | 16/12 | 25 | 30 | 16 | 30 |
| B6-25x16x40 | 25 | 75 | 50 | 7 | 16/12 | 25 | 30 | 26 | 40 |
| B6-30x20x40 | 30 | 100 | 65 | 10 | 20/16 | 28 | 38 | 22 | 40 |
| B6-30x20x60 | 30 | 100 | 65 | 10 | 20/16 | 28 | 38 | 42 | 60 |
| B6-40x25x44 | 40 | 118 | 75.5 | 12.5 | 25/20 | 32.5 | 48 | 22 | 44 |
| B6-50x32x55 | 50 | 130 | 80 | 16 | 32/25 | 35 | 60 | 30 | 55 |
| B6-60x32x60 | 60 | 145 | 82.5 | 16 | 32/25 | 42.5 | 62.5 | 30 | 60 |
| B6-80x40x75 | 80 | 190 | 110 | 20 | 40/32 | 55 | 80 | 40 | 75 |

Inch

| Size | d1 | b1 | b2 | b3 | h1 | h5 | h6 | l1 | l2 |
|-----------------|----|-----|------|------|--------|------|------|----|----|
| B6-20x5/8"x30 | 20 | 75 | 50 | 7 | 5/8" | 25 | 30 | 16 | 30 |
| B6-30x3/4"x40 | 30 | 100 | 65 | 10 | 3/4" | 28 | 38 | 22 | 40 |
| B6-40x1"x44 | 40 | 118 | 75.5 | 12.5 | 1" | 32.5 | 48 | 22 | 44 |
| B6-50x1-1/4"x55 | 50 | 130 | 80 | 16 | 1-1/4" | 35 | 60 | 30 | 55 |
| B6-60x1-1/4"x60 | 60 | 145 | 82.5 | 16 | 1-1/4" | 42.5 | 62.5 | 30 | 60 |

Radial Holder Form B7 Inverted Right, Long 长型横向反切右刀夹



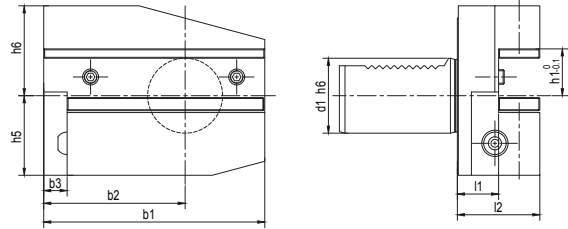
Metric

| Size | d1 | b1 | b2 | b3 | h1 | h5 | h6 | l1 | l2 |
|-------------|----|-----|------|------|-------|------|------|----|----|
| B7-16x12x24 | 16 | 58 | 39 | 5 | 12 | 20 | 22 | 13 | 24 |
| B7-16x12x34 | 16 | 58 | 39 | 5 | 12 | 20 | 22 | 23 | 34 |
| B7-20x16x30 | 20 | 75 | 50 | 7 | 16/12 | 25 | 30 | 16 | 30 |
| B7-20x16x40 | 20 | 75 | 50 | 7 | 16/12 | 25 | 30 | 26 | 40 |
| B7-25x16x30 | 25 | 75 | 50 | 7 | 16/12 | 25 | 30 | 16 | 30 |
| B7-25x16x40 | 25 | 75 | 50 | 7 | 16/12 | 25 | 30 | 26 | 40 |
| B7-30x20x40 | 30 | 100 | 65 | 10 | 20/16 | 35 | 38 | 22 | 40 |
| B7-30x20x60 | 30 | 100 | 65 | 10 | 20/16 | 35 | 38 | 42 | 60 |
| B7-40x25x44 | 40 | 118 | 75.5 | 12.5 | 25/20 | 42.5 | 48 | 22 | 44 |
| B7-50x32x55 | 50 | 130 | 80 | 16 | 32/25 | 50 | 60 | 30 | 55 |
| B7-60x32x60 | 60 | 145 | 82.5 | 16 | 32/25 | 62.5 | 62.5 | 30 | 60 |
| B7-80x40x75 | 80 | 190 | 110 | 20 | 40/32 | 80 | 80 | 40 | 75 |

Inch

| Size | d1 | b1 | b2 | b3 | h1 | h5 | h6 | l1 | l2 |
|------------------|----|-----|------|------|--------|------|------|----|----|
| B7-20x5/8"x30 | 20 | 75 | 50 | 7 | 5/8" | 25 | 30 | 16 | 30 |
| B7-30x3/4"x40 | 30 | 100 | 65 | 10 | 3/4" | 35 | 38 | 22 | 40 |
| B7-40x1"x44 | 40 | 118 | 75.5 | 12.5 | 1" | 42.5 | 48 | 22 | 44 |
| B7-50x1-1/4" x55 | 50 | 130 | 80 | 16 | 1-1/4" | 50 | 60 | 30 | 55 |
| B7-60x1-1/4" x60 | 60 | 145 | 82.5 | 16 | 1-1/4" | 62.5 | 62.5 | 30 | 60 |

Radial Holder Form B8 Inverted Left, Long 长型横向反切左刀夹



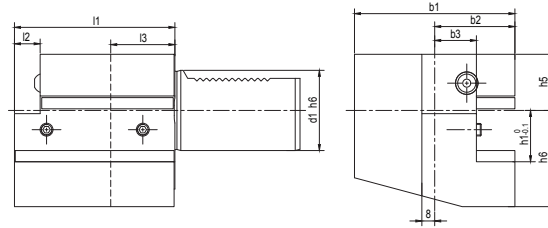
Metric

| Size | d1 | b1 | b2 | b3 | h1 | h5 | h6 | l1 | l2 |
|-------------|----|-----|------|------|-------|------|------|----|----|
| B8-16x12x24 | 16 | 58 | 39 | 5 | 12 | 20 | 22 | 13 | 24 |
| B8-16x12x34 | 16 | 58 | 39 | 5 | 12 | 20 | 22 | 23 | 34 |
| B8-20x16x30 | 20 | 75 | 50 | 7 | 16/12 | 25 | 30 | 16 | 30 |
| B8-20x16x40 | 20 | 75 | 50 | 7 | 16/12 | 25 | 30 | 26 | 40 |
| B8-25x16x30 | 25 | 75 | 50 | 7 | 16/12 | 25 | 30 | 16 | 30 |
| B8-25x16x40 | 25 | 75 | 50 | 7 | 16/12 | 25 | 30 | 26 | 40 |
| B8-30x20x40 | 30 | 100 | 65 | 10 | 20/16 | 35 | 38 | 22 | 40 |
| B8-30x20x60 | 30 | 100 | 65 | 10 | 20/16 | 35 | 38 | 42 | 60 |
| B8-40x25x44 | 40 | 118 | 75.5 | 12.5 | 25/20 | 42.5 | 48 | 22 | 44 |
| B8-50x32x55 | 50 | 130 | 80 | 16 | 32/25 | 50 | 60 | 30 | 55 |
| B8-60x32x60 | 60 | 145 | 82.5 | 16 | 32/25 | 62.5 | 62.5 | 30 | 60 |
| B8-80x40x75 | 80 | 190 | 110 | 20 | 40/32 | 80 | 80 | 40 | 75 |

Inch

| Size | d1 | b1 | b2 | b3 | h1 | h5 | h6 | l1 | l2 |
|------------------|----|-----|------|------|--------|------|------|----|----|
| B8-20x5/8"x30 | 20 | 75 | 50 | 7 | 5/8" | 25 | 30 | 16 | 30 |
| B8-30x3/4"x40 | 30 | 100 | 65 | 10 | 3/4" | 35 | 38 | 22 | 40 |
| B8-40x1"x44 | 40 | 118 | 75.5 | 12.5 | 1" | 42.5 | 48 | 22 | 44 |
| B8-50x1-1/4" x55 | 50 | 130 | 80 | 16 | 1-1/4" | 50 | 60 | 30 | 55 |
| B8-60x1-1/4" x60 | 60 | 145 | 82.5 | 16 | 1-1/4" | 62.5 | 62.5 | 30 | 60 |

Axial Holder Form C1 Right 纵向右刀夹



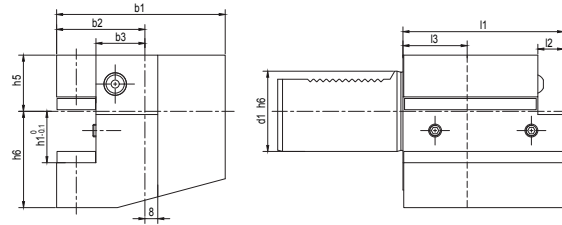
Metric

| Size | d1 | b1 | b2 | b3 | h1 | h5 | h6 | l1 | l2 | l3 |
|--------------|----|-----|------|----|-------|------|------|-----|------|----|
| C1-16x12x44 | 16 | 43 | 24 | 13 | 12 | 20 | 22 | 44 | 5 | 20 |
| C1-20x16x50 | 20 | 65 | 40 | 26 | 16/12 | 25 | 30 | 50 | - | 30 |
| C1-20x16x55 | 20 | 52 | 27 | 13 | 16/12 | 25 | 30 | 55 | 7 | 30 |
| C1-25x16x55 | 25 | 58 | 33 | 19 | 16/12 | 25 | 30 | 55 | 7 | 20 |
| C1-30x20x70 | 30 | 70 | 35 | 17 | 20/16 | 28 | 38 | 70 | 10 | 30 |
| C1-40x25x85 | 40 | 85 | 42.5 | 21 | 25/20 | 32.5 | 48 | 85 | 12.5 | 30 |
| C1-50x32x100 | 50 | 100 | 50 | 26 | 32/25 | 35 | 60 | 100 | 16 | 40 |
| C1-60x32x125 | 60 | 125 | 62.5 | 33 | 32/25 | 42.5 | 62.5 | 125 | 16 | 40 |
| C1-80x40x160 | 80 | 160 | 80 | 42 | 40/32 | 55 | 80 | 160 | 20 | 40 |

Inch

| Size | d1 | b1 | b2 | b3 | h1 | h5 | h6 | l1 | l2 | l3 |
|-------------------|----|-----|------|----|--------|------|------|-----|------|----|
| C1-20x5/8"x50 | 20 | 65 | 40 | 26 | 5/8" | 25 | 30 | 50 | - | 30 |
| C1-30x3/4"x70 | 30 | 70 | 35 | 17 | 3/4" | 28 | 38 | 70 | 10 | 30 |
| C1-40x1"x85 | 40 | 85 | 42.5 | 21 | 1" | 32.5 | 48 | 85 | 12.5 | 30 |
| C1-50x1-1/4" x100 | 50 | 100 | 50 | 26 | 1-1/4" | 35 | 60 | 100 | 16 | 40 |
| C1-60x1-1/4" x125 | 60 | 125 | 62.5 | 33 | 1-1/4" | 42.5 | 62.5 | 125 | 16 | 40 |

Axial Holder Form C2 Left 纵向左刀夹



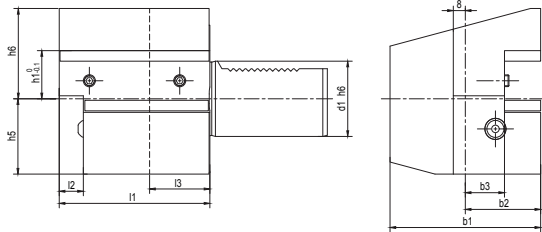
Metric

| Size | d1 | b1 | b2 | b3 | h1 | h5 | h6 | l1 | l2 | l3 |
|--------------|----|-----|------|------|-------|------|------|-----|------|----|
| C2-16x12x44 | 16 | 43 | 24 | 13 | 12 | 20 | 22 | 44 | 5 | 20 |
| C2-20x16x50 | 20 | 65 | 40 | 26 | 16/12 | 25 | 30 | 50 | - | 30 |
| C2-25x16x55 | 25 | 58 | 33 | 19 | 16/12 | 25 | 30 | 55 | 7 | 20 |
| C2-30x20x70 | 30 | 76 | 41 | 23 | 20/16 | 28 | 38 | 70 | 10 | 30 |
| C2-40x25x85 | 40 | 90 | 47.5 | 25.5 | 25/20 | 32.5 | 48 | 85 | 12.5 | 30 |
| C2-50x32x100 | 50 | 105 | 55 | 30.5 | 32/25 | 35 | 60 | 100 | 16 | 40 |
| C2-60x32x125 | 60 | 125 | 62.5 | 33 | 32/25 | 42.5 | 62.5 | 125 | 16 | 40 |
| C2-80x40x160 | 80 | 160 | 78 | 42 | 40/32 | 55 | 80 | 160 | 20 | 40 |

Inch

| Size | d1 | b1 | b2 | b3 | h1 | h5 | h6 | l1 | l2 | l3 |
|-------------------|----|-----|------|------|--------|------|------|-----|------|----|
| C2-20x5/8"x50 | 20 | 65 | 40 | 26 | 5/8" | 25 | 30 | 50 | - | 30 |
| C2-30x3/4"x70 | 30 | 76 | 41 | 23 | 3/4" | 28 | 38 | 70 | 10 | 30 |
| C2-40x1"x85 | 40 | 90 | 47.5 | 25.5 | 1" | 32.5 | 48 | 85 | 12.5 | 30 |
| C2-50x1-1/4" x100 | 50 | 105 | 55 | 30.5 | 1-1/4" | 35 | 60 | 100 | 16 | 40 |
| C2-60x1-1/4" x125 | 60 | 125 | 62.5 | 33 | 1-1/4" | 42.5 | 62.5 | 125 | 16 | 40 |

Axial Holder Form C3 Inverted Right 纵向反切右刀夹



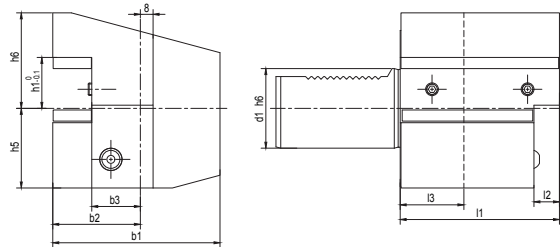
Metric

| Size | d1 | b1 | b2 | b3 | h1 | h5 | h6 | l1 | l2 | l3 |
|--------------|----|-----|------|----|-------|------|------|-----|------|----|
| C3-16x12x44 | 16 | 43 | 24 | 13 | 12 | 20 | 22 | 44 | 5 | 20 |
| C3-20x16x50 | 20 | 65 | 40 | 26 | 16/12 | 25 | 30 | 50 | - | 30 |
| C3-20x16x55 | 20 | 52 | 27 | 13 | 16/12 | 25 | 30 | 55 | 7 | 30 |
| C3-25x16x55 | 25 | 58 | 33 | 19 | 16/12 | 25 | 30 | 55 | 7 | 20 |
| C3-30x20x70 | 30 | 70 | 35 | 17 | 20/16 | 35 | 38 | 70 | 10 | 30 |
| C3-40x25x85 | 40 | 85 | 42.5 | 21 | 25/20 | 42.5 | 48 | 85 | 12.5 | 30 |
| C3-50x32x100 | 50 | 100 | 50 | 26 | 32/25 | 50 | 60 | 100 | 16 | 40 |
| C3-60x32x125 | 60 | 125 | 62.5 | 33 | 32/25 | 62.5 | 62.5 | 125 | 16 | 40 |
| C3-80x40x160 | 80 | 160 | 80 | 42 | 40/32 | 80 | 80 | 160 | 20 | 40 |

Inch

| Size | d1 | b1 | b2 | b3 | h1 | h5 | h6 | l1 | l2 | l3 |
|------------------|----|-----|------|----|--------|------|------|-----|------|----|
| C3-20x5/8"x50 | 20 | 65 | 40 | 26 | 5/8" | 25 | 30 | 50 | - | 30 |
| C3-30x3/4"x70 | 30 | 70 | 35 | 17 | 3/4" | 35 | 38 | 70 | 10 | 30 |
| C3-40x1"x85 | 40 | 85 | 42.5 | 21 | 1" | 42.5 | 48 | 85 | 12.5 | 30 |
| C3-50x1-1/4"x100 | 50 | 100 | 50 | 26 | 1-1/4" | 50 | 60 | 100 | 16 | 40 |
| C3-60x1-1/4"x125 | 60 | 125 | 62.5 | 33 | 1-1/4" | 62.5 | 62.5 | 125 | 16 | 40 |

Axial Holder Form C4 Inverted Left 纵向反切左刀夹



Metric

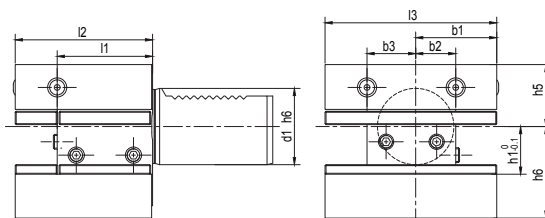
| Size | d1 | b1 | b2 | b3 | h1 | h5 | h6 | l1 | l2 | l3 |
|--------------|----|-----|------|------|-------|------|------|-----|------|----|
| C4-16x12x44 | 16 | 43 | 24 | 13 | 12 | 20 | 22 | 44 | 5 | 20 |
| C4-20x16x50 | 20 | 65 | 40 | 26 | 16/12 | 25 | 30 | 50 | - | 30 |
| C4-25x16x55 | 25 | 58 | 33 | 19 | 16/12 | 25 | 30 | 55 | 7 | 20 |
| C4-30x20x70 | 30 | 76 | 41 | 23 | 20/16 | 35 | 38 | 70 | 10 | 30 |
| C4-40x25x85 | 40 | 90 | 47.5 | 25.5 | 25/20 | 42.5 | 48 | 85 | 12.5 | 30 |
| C4-50x32x100 | 50 | 105 | 55 | 30.5 | 32/25 | 50 | 60 | 100 | 16 | 40 |
| C4-60x32x125 | 60 | 125 | 62.5 | 33 | 32/25 | 62.5 | 62.5 | 125 | 16 | 40 |
| C4-80x40x160 | 80 | 160 | 78 | 42 | 40/32 | 80 | 80 | 160 | 20 | 40 |

Inch

| Size | d1 | b1 | b2 | b3 | h1 | h5 | h6 | l1 | l2 | l3 |
|------------------|----|-----|------|------|--------|------|------|-----|------|----|
| C4-20x5/8"x50 | 20 | 65 | 40 | 26 | 5/8" | 25 | 30 | 50 | - | 30 |
| C4-30x3/4"x70 | 30 | 76 | 41 | 23 | 3/4" | 35 | 38 | 70 | 10 | 30 |
| C4-40x1"x85 | 40 | 90 | 47.5 | 25.5 | 1" | 42.5 | 48 | 85 | 12.5 | 30 |
| C4-50x1-1/4"x100 | 50 | 105 | 55 | 30.5 | 1-1/4" | 50 | 60 | 100 | 16 | 40 |
| C4-60x1-1/4"x125 | 60 | 125 | 62.5 | 33 | 1-1/4" | 62.5 | 62.5 | 125 | 16 | 40 |

Rectangular Holder with Multiple Seats Form D1

多座刀夹



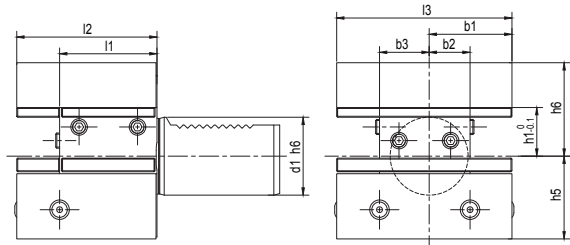
Metric

| Size | d1 | b1 | b2 | b3 | h1 | h5 | h6 | l1 | l2 | l3 |
|--------------|----|------|----|------|-------|------|------|-----|-----|-----|
| D1-25x16x48 | 25 | 33 | 19 | 19 | 16/12 | 25 | 30 | 34 | 48 | 66 |
| D1-30x20x60 | 30 | 35 | 17 | 23 | 20/16 | 28 | 38 | 42 | 60 | 76 |
| D1-40x25x72 | 40 | 42.5 | 21 | 25.5 | 25/20 | 32.5 | 48 | 50 | 72 | 90 |
| D1-50x32x85 | 50 | 50 | 26 | 30.5 | 32/25 | 35 | 60 | 60 | 85 | 105 |
| D1-60x32x110 | 60 | 57.5 | 33 | 33 | 32/25 | 42.5 | 62.5 | 85 | 110 | 115 |
| D1-80x40x140 | 80 | 76 | 42 | 42 | 40/32 | 55 | 80 | 105 | 140 | 152 |

Inch

| Size | d1 | b1 | b2 | b3 | h1 | h5 | h6 | l1 | l2 | l3 |
|-------------------|----|------|----|------|--------|------|------|----|-----|-----|
| D1-30x3/4"x60 | 30 | 35 | 17 | 23 | 3/4" | 28 | 38 | 42 | 60 | 76 |
| D1-40x1"x72 | 40 | 42.5 | 21 | 25.5 | 1" | 32.5 | 48 | 50 | 72 | 90 |
| D1-50x1-1/4" x85 | 50 | 50 | 26 | 30.5 | 1-1/4" | 35 | 60 | 60 | 85 | 105 |
| D1-60x1-1/4" x110 | 60 | 57.5 | 33 | 33 | 1-1/4" | 42.5 | 62.5 | 85 | 110 | 115 |

Rectangular Holder with Multiple Seats Form D2 Inverted 多座反切刀夹



Metric

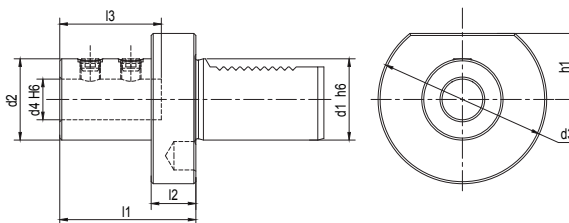
| Size | d1 | b1 | b2 | b3 | h1 | h5 | h6 | l1 | l2 | l3 |
|--------------|----|------|----|------|-------|------|------|-----|-----|-----|
| D2-25x16x48 | 25 | 33 | 19 | 19 | 16/12 | 25 | 30 | 34 | 48 | 66 |
| D2-30x20x60 | 30 | 35 | 17 | 23 | 20/16 | 35 | 38 | 42 | 60 | 76 |
| D2-40x25x72 | 40 | 42.5 | 21 | 25.5 | 25/20 | 42.5 | 48 | 50 | 72 | 90 |
| D2-50x32x85 | 50 | 50 | 26 | 30.5 | 32/25 | 50 | 60 | 60 | 85 | 105 |
| D2-60x32x110 | 60 | 57.5 | 33 | 33 | 32/25 | 62.5 | 62.5 | 85 | 110 | 115 |
| D2-80x40x140 | 80 | 76 | 42 | 42 | 40/32 | 80 | 80 | 105 | 140 | 152 |

Inch

| Size | d1 | b1 | b2 | b3 | h1 | h5 | h6 | l1 | l2 | l3 |
|-------------------|----|------|----|------|--------|------|------|----|-----|-----|
| D2-30x3/4"x60 | 30 | 35 | 17 | 23 | 3/4" | 35 | 38 | 42 | 60 | 76 |
| D2-40x1"x72 | 40 | 42.5 | 21 | 25.5 | 1" | 42.5 | 48 | 50 | 72 | 90 |
| D2-50x1-1/4" x85 | 50 | 50 | 26 | 30.5 | 1-1/4" | 50 | 60 | 60 | 85 | 105 |
| D2-60x1-1/4" x110 | 60 | 57.5 | 33 | 33 | 1-1/4" | 62.5 | 62.5 | 85 | 110 | 115 |

Boring Holder for Indexable Insert Drill Form E1

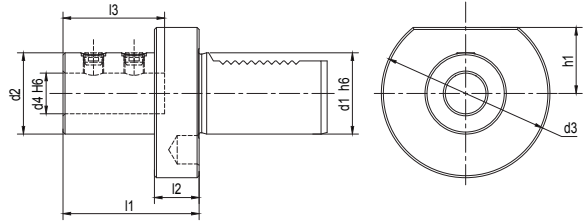
可转位浅孔钻刀夹



Metric

| Size | d1 | d2 | d3 | d4 | h1 | l1 | l2 | l3 |
|----------|----|----|----|----|------|-----|----|----|
| E1-20x16 | 20 | 36 | 50 | 16 | - | 67 | 18 | 54 |
| E1-20x20 | 20 | 40 | 50 | 20 | - | 67 | 18 | 54 |
| E1-20x25 | 20 | 45 | 50 | 25 | - | 71 | 18 | 59 |
| E1-25x16 | 25 | 36 | 58 | 16 | 25 | 67 | 18 | 54 |
| E1-25x20 | 25 | 40 | 58 | 20 | 25 | 67 | 18 | 54 |
| E1-25x25 | 25 | 45 | 58 | 25 | 25 | 71 | 18 | 59 |
| E1-25x32 | 25 | 52 | 58 | 32 | 25 | 75 | 18 | 63 |
| E1-30x16 | 30 | 36 | 68 | 16 | 28 | 67 | 22 | 54 |
| E1-30x20 | 30 | 40 | 68 | 20 | 28 | 67 | 22 | 54 |
| E1-30x25 | 30 | 45 | 68 | 25 | 28 | 71 | 22 | 58 |
| E1-30x32 | 30 | 52 | 68 | 32 | 28 | 75 | 22 | 61 |
| E1-30x40 | 30 | 65 | 68 | 40 | 28 | 90 | 22 | 72 |
| E1-40x16 | 40 | 36 | 83 | 16 | 32.5 | 67 | 22 | 54 |
| E1-40x20 | 40 | 40 | 83 | 20 | 32.5 | 67 | 22 | 54 |
| E1-40x25 | 40 | 45 | 83 | 25 | 32.5 | 75 | 22 | 59 |
| E1-40x32 | 40 | 52 | 83 | 32 | 32.5 | 75 | 22 | 61 |
| E1-40x40 | 40 | 65 | 83 | 40 | 32.5 | 90 | 22 | 73 |
| E1-40x50 | 40 | 75 | 83 | 50 | 32.5 | 100 | 22 | 83 |

Boring Holder for Indexable Insert Drill Form E1 可转位浅孔钻刀夹

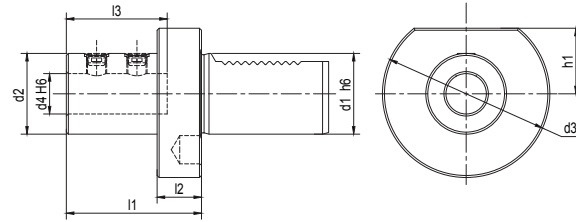


Metric

| Size | d1 | d2 | d3 | d4 | h1 | l1 | l2 | l3 |
|----------|----|----|-----|----|------|-----|----|----|
| E1-50x16 | 50 | 36 | 98 | 16 | 35 | 80 | 30 | 54 |
| E1-50x20 | 50 | 40 | 98 | 20 | 35 | 67 | 30 | 54 |
| E1-50x25 | 50 | 45 | 98 | 25 | 35 | 80 | 30 | 59 |
| E1-50x32 | 50 | 52 | 98 | 32 | 35 | 80 | 30 | 63 |
| E1-50x40 | 50 | 65 | 98 | 40 | 35 | 90 | 30 | 73 |
| E1-50x50 | 50 | 75 | 98 | 50 | 35 | 100 | 30 | 83 |
| | | | | | | | | |
| E1-60x16 | 60 | 36 | 123 | 16 | 42.5 | 80 | 30 | 54 |
| E1-60x20 | 60 | 40 | 123 | 20 | 42.5 | 80 | 30 | 54 |
| E1-60x25 | 60 | 45 | 123 | 25 | 42.5 | 80 | 30 | 59 |
| E1-60x32 | 60 | 52 | 123 | 32 | 42.5 | 80 | 30 | 63 |
| E1-60x40 | 60 | 65 | 123 | 40 | 42.5 | 90 | 30 | 73 |
| E1-60x50 | 60 | 75 | 123 | 50 | 42.5 | 100 | 30 | 83 |
| | | | | | | | | |
| E1-80x20 | 80 | 40 | 158 | 20 | 55 | 80 | 30 | 54 |
| E1-80x25 | 80 | 45 | 158 | 25 | 55 | 80 | 30 | 59 |
| E1-80x32 | 80 | 52 | 158 | 32 | 55 | 80 | 30 | 63 |
| E1-80x40 | 80 | 65 | 158 | 40 | 55 | 90 | 30 | 73 |
| E1-80x50 | 80 | 75 | 158 | 50 | 55 | 100 | 30 | 83 |

Boring Holder for Indexable Insert Drill Form E1

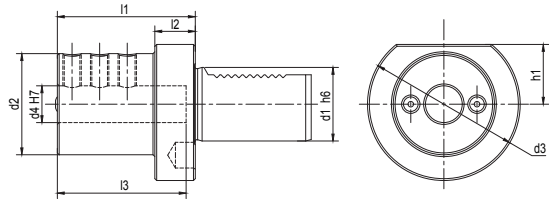
可转位浅孔钻刀夹



Inch

| Size | d1 | d2 | d3 | d4 | h1 | l1 | l2 | l3 |
|--------------|----|----|----|--------|------|-----|----|----|
| E1-20x3/4" | 20 | 40 | 50 | 3/4" | - | 67 | 18 | 54 |
| E1-20x1" | 20 | 45 | 50 | 1" | - | 71 | 18 | 59 |
| E1-30x3/4" | 30 | 40 | 68 | 3/4" | 28 | 67 | 22 | 54 |
| E1-30x1" | 30 | 45 | 68 | 1" | 28 | 71 | 22 | 58 |
| E1-30x1-1/4" | 30 | 52 | 68 | 1-1/4" | 28 | 75 | 22 | 61 |
| E1-40x5/8" | 40 | 36 | 83 | 5/8" | 32.5 | 67 | 22 | 54 |
| E1-40x3/4" | 40 | 40 | 83 | 3/4" | 32.5 | 67 | 22 | 54 |
| E1-40x1" | 40 | 45 | 83 | 1" | 32.5 | 75 | 22 | 59 |
| E1-40x1-1/4" | 40 | 52 | 83 | 1-1/4" | 32.5 | 75 | 22 | 61 |
| E1-40x1-1/2" | 40 | 65 | 83 | 1-1/2" | 32.5 | 90 | 22 | 73 |
| E1-50x3/4" | 50 | 40 | 98 | 3/4" | 35 | 80 | 30 | 54 |
| E1-50x1" | 50 | 45 | 98 | 1" | 35 | 80 | 30 | 59 |
| E1-50x1-1/4" | 50 | 52 | 98 | 1-1/4" | 35 | 80 | 30 | 63 |
| E1-50x1-1/2" | 50 | 65 | 98 | 1-1/2" | 35 | 90 | 30 | 73 |
| E1-50x2" | 50 | 75 | 98 | 2" | 35 | 100 | 30 | 83 |

Boring Holder Form E2 镗孔刀夹

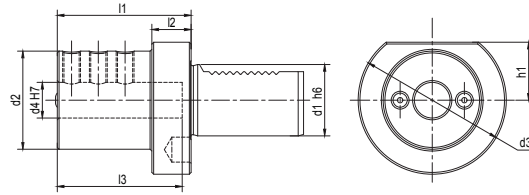


Metric

| Size | d1 | d2 | d3 | d4 | h1 | l1 | l2 | l3 |
|----------|----|----|----|----|----|----|----|----|
| E2-16x6 | 16 | 32 | 40 | 6 | 18 | 44 | 13 | 34 |
| E2-16x8 | 16 | 32 | 40 | 8 | 18 | 44 | 13 | 34 |
| E2-16x10 | 16 | 32 | 40 | 10 | 18 | 44 | 13 | 34 |
| E2-16x12 | 16 | 40 | 40 | 12 | 18 | 44 | 13 | 34 |
| E2-16x16 | 16 | 40 | 40 | 16 | 18 | 44 | 13 | 34 |
| E2-20x6 | 20 | 40 | 50 | 6 | 23 | 50 | 18 | 42 |
| E2-20x8 | 20 | 40 | 50 | 8 | 23 | 50 | 18 | 42 |
| E2-20x10 | 20 | 40 | 50 | 10 | 23 | 50 | 18 | 42 |
| E2-20x12 | 20 | 40 | 50 | 12 | 23 | 50 | 18 | 42 |
| E2-20x16 | 20 | 42 | 50 | 16 | 23 | 50 | 18 | 42 |
| E2-20x20 | 20 | 49 | 50 | 20 | 23 | 50 | 18 | 42 |
| E2-20x25 | 20 | 49 | 50 | 25 | 23 | 60 | 18 | 52 |
| E2-25x8 | 25 | 40 | 58 | 8 | 25 | 50 | 18 | 41 |
| E2-25x10 | 25 | 40 | 58 | 10 | 25 | 50 | 18 | 41 |
| E2-25x12 | 25 | 40 | 58 | 12 | 25 | 50 | 18 | 41 |
| E2-25x16 | 25 | 40 | 58 | 16 | 25 | 50 | 18 | 41 |
| E2-25x20 | 25 | 58 | 58 | 20 | 25 | 50 | 18 | 41 |
| E2-25x25 | 25 | 58 | 58 | 25 | 25 | 60 | 18 | 51 |
| E2-25x32 | 25 | 58 | 58 | 32 | 25 | 75 | 18 | 62 |

Boring Holder Form E2

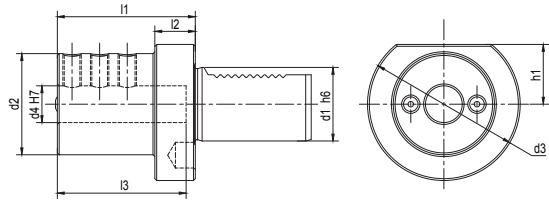
镗孔刀夹



Metric

| Size | d1 | d2 | d3 | d4 | h1 | l1 | l2 | l3 |
|----------|----|----|----|----|------|-----|----|----|
| E2-30x6 | 30 | 55 | 68 | 6 | 28 | 60 | 22 | 43 |
| E2-30x8 | 30 | 55 | 68 | 8 | 28 | 60 | 22 | 43 |
| E2-30x10 | 30 | 55 | 68 | 10 | 28 | 60 | 22 | 43 |
| E2-30x12 | 30 | 55 | 68 | 12 | 28 | 60 | 22 | 43 |
| E2-30x16 | 30 | 55 | 68 | 16 | 28 | 60 | 22 | 55 |
| E2-30x20 | 30 | 55 | 68 | 20 | 28 | 60 | 22 | 54 |
| E2-30x25 | 30 | 55 | 68 | 25 | 28 | 60 | 22 | 54 |
| E2-30x30 | 30 | 67 | 68 | 30 | 28 | 75 | 22 | 61 |
| E2-30x32 | 30 | 67 | 68 | 32 | 28 | 75 | 22 | 61 |
| | | | | | | | | |
| E2-40x8 | 40 | 55 | 83 | 8 | 32.5 | 75 | 22 | 43 |
| E2-40x10 | 40 | 55 | 83 | 10 | 32.5 | 75 | 22 | 43 |
| E2-40x12 | 40 | 55 | 83 | 12 | 32.5 | 75 | 22 | 58 |
| E2-40x16 | 40 | 55 | 83 | 16 | 32.5 | 75 | 22 | 61 |
| E2-40x20 | 40 | 55 | 83 | 20 | 32.5 | 75 | 22 | 61 |
| E2-40x25 | 40 | 55 | 83 | 25 | 32.5 | 75 | 22 | 61 |
| E2-40x30 | 40 | 82 | 83 | 30 | 32.5 | 75 | 22 | 61 |
| E2-40x32 | 40 | 82 | 83 | 32 | 32.5 | 75 | 22 | 61 |
| E2-40x40 | 40 | 82 | 83 | 40 | 32.5 | 90 | 22 | 76 |
| | | | | | | | | |
| E2-50x12 | 50 | 68 | 98 | 12 | 35 | 90 | 30 | 71 |
| E2-50x16 | 50 | 68 | 98 | 16 | 35 | 90 | 30 | 76 |
| E2-50x20 | 50 | 68 | 98 | 20 | 35 | 90 | 30 | 76 |
| E2-50x25 | 50 | 68 | 98 | 25 | 35 | 90 | 30 | 76 |
| E2-50x30 | 50 | 69 | 98 | 30 | 35 | 90 | 30 | 76 |
| E2-50x32 | 50 | 69 | 98 | 32 | 35 | 90 | 30 | 76 |
| E2-50x40 | 50 | 98 | 98 | 40 | 35 | 90 | - | 76 |
| E2-50x50 | 50 | 98 | 98 | 50 | 35 | 100 | - | 86 |

Boring Holder Form E2 镗孔刀夹

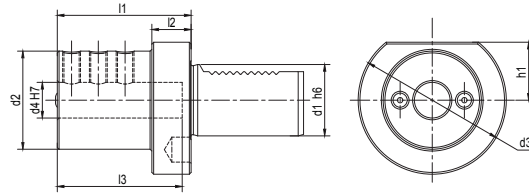


Metric

| Size | d1 | d2 | d3 | d4 | h1 | l1 | l2 | l3 |
|----------|----|----|-----|----|------|-----|----|----|
| E2-60x16 | 60 | 68 | 123 | 16 | 42.5 | 90 | 30 | 76 |
| E2-60x20 | 60 | 68 | 123 | 20 | 42.5 | 90 | 30 | 76 |
| E2-60x25 | 60 | 68 | 123 | 25 | 42.5 | 90 | 30 | 76 |
| E2-60x30 | 60 | 68 | 123 | 30 | 42.5 | 90 | 30 | 76 |
| E2-60x32 | 60 | 68 | 123 | 32 | 42.5 | 90 | 30 | 76 |
| E2-60x40 | 60 | 98 | 123 | 40 | 42.5 | 90 | 30 | 76 |
| E2-60x50 | 60 | 98 | 123 | 50 | 42.5 | 100 | 30 | 86 |
| E2-80x20 | 80 | 68 | 158 | 20 | 55 | 100 | 30 | 86 |
| E2-80x25 | 80 | 68 | 158 | 25 | 55 | 100 | 30 | 86 |
| E2-80x32 | 80 | 68 | 158 | 32 | 55 | 100 | 30 | 86 |
| E2-80x40 | 80 | 98 | 158 | 40 | 55 | 100 | 30 | 86 |
| E2-80x50 | 80 | 98 | 158 | 50 | 55 | 100 | 30 | 92 |
| E2-80x60 | 80 | 98 | 158 | 60 | 55 | 100 | 30 | 92 |

Boring Holder Form E2

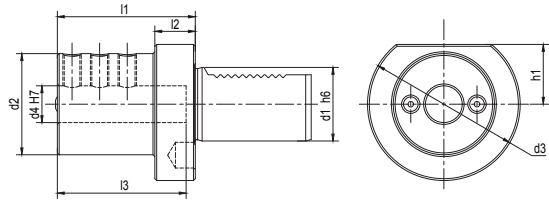
镗孔刀夹



Inch

| Size | d1 | d2 | d3 | d4 | h1 | l1 | l2 | l3 |
|--------------|----|----|----|--------|------|----|----|----|
| E2-20x5/16" | 20 | 40 | 50 | 5/16" | 23 | 50 | 18 | 42 |
| E2-20x3/8" | 20 | 40 | 50 | 3/8" | 23 | 50 | 18 | 42 |
| E2-20x1/2" | 20 | 40 | 50 | 1/2" | 23 | 50 | 18 | 42 |
| E2-20x5/8" | 20 | 40 | 50 | 5/8" | 23 | 50 | 18 | 42 |
| E2-20x3/4" | 20 | 45 | 50 | 3/4" | 23 | 50 | 18 | 42 |
| E2-20x1" | 20 | 50 | 50 | 1" | 23 | 60 | 18 | 52 |
| | | | | | | | | |
| E2-30x5/16" | 30 | 55 | 68 | 5/16" | 28 | 60 | 22 | 43 |
| E2-30x3/8" | 30 | 55 | 68 | 3/8" | 28 | 60 | 22 | 43 |
| E2-30x1/2" | 30 | 55 | 68 | 1/2" | 28 | 60 | 22 | 43 |
| E2-30x5/8" | 30 | 55 | 68 | 5/8" | 28 | 60 | 22 | 55 |
| E2-30x3/4" | 30 | 55 | 68 | 3/4" | 28 | 60 | 22 | 54 |
| E2-30x1" | 30 | 55 | 68 | 1" | 28 | 60 | 22 | 54 |
| E2-30x1-1/4" | 30 | 67 | 68 | 1-1/4" | 28 | 75 | 22 | 61 |
| | | | | | | | | |
| E2-40x3/8" | 40 | 55 | 83 | 3/8" | 32.5 | 75 | 22 | 43 |
| E2-40x1/2" | 40 | 55 | 83 | 1/2" | 32.5 | 75 | 22 | 58 |
| E2-40x5/8" | 40 | 55 | 83 | 5/8" | 32.5 | 75 | 22 | 61 |
| E2-40x3/4" | 40 | 55 | 83 | 3/4" | 32.5 | 75 | 22 | 61 |
| E2-40x1" | 40 | 55 | 83 | 1" | 32.5 | 75 | 22 | 61 |
| E2-40x1-1/4" | 40 | 82 | 83 | 1-1/4" | 32.5 | 75 | 22 | 61 |
| E2-40x1-1/2" | 40 | 82 | 83 | 1-1/2" | 32.5 | 90 | 22 | 76 |

Boring Holder Form E2 镗孔刀夹

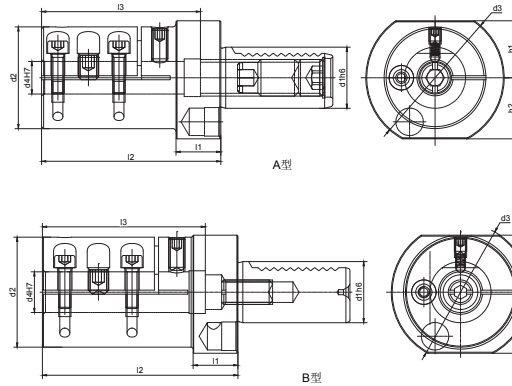


Inch

| Size | d1 | d2 | d3 | d4 | h1 | l1 | l2 | l3 |
|--------------|----|----|-----|--------|------|-----|----|----|
| E2-50x1/2" | 50 | 68 | 98 | 1/2" | 35 | 90 | 30 | 71 |
| E2-50x5/8" | 50 | 68 | 98 | 5/8" | 35 | 90 | 30 | 76 |
| E2-50x3/4" | 50 | 68 | 98 | 3/4" | 35 | 90 | 30 | 76 |
| E2-50x1" | 50 | 68 | 98 | 1" | 35 | 90 | 30 | 76 |
| E2-50x1-1/4" | 50 | 69 | 98 | 1-1/4" | 35 | 90 | 30 | 76 |
| E2-50x1-1/2" | 50 | 98 | 98 | 1-1/2" | 35 | 90 | - | 76 |
| E2-50x2" | 50 | 98 | 98 | 2" | 35 | 100 | - | 86 |
| E2-60x5/8" | 60 | 68 | 123 | 5/8" | 42.5 | 90 | 30 | 76 |
| E2-60x3/4" | 60 | 68 | 123 | 3/4" | 42.5 | 90 | 30 | 76 |
| E2-60x1" | 60 | 68 | 123 | 1" | 42.5 | 90 | 30 | 76 |
| E2-60x1-1/4" | 60 | 68 | 123 | 1-1/4" | 42.5 | 90 | 30 | 76 |
| E2-60x1-1/2" | 60 | 98 | 123 | 1-1/2" | 42.5 | 90 | 30 | 76 |
| E2-60x2" | 60 | 98 | 123 | 2" | 42.5 | 100 | 30 | 86 |

Boring Bar Holder Form E2S

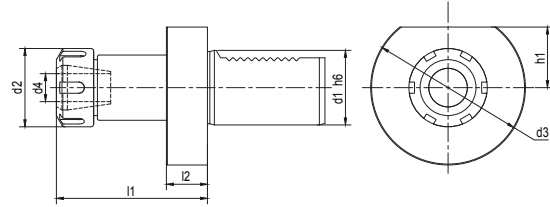
镗孔刀夹，开槽型



Inch

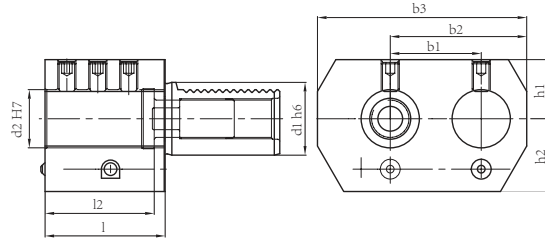
| Size | d1 | d2 | d3 | d4 | h1 | h2 | l1 | l2 | l3 | T |
|-----------|----|----|-----|----|------|----|----|-----|-----|---|
| E2S-30x6 | 30 | 32 | 68 | 6 | 28 | - | 22 | 75 | 65 | A |
| E2S-30x8 | 30 | 34 | 68 | 8 | 28 | - | 22 | 75 | 65 | A |
| E2S-30x10 | 30 | 38 | 68 | 10 | 28 | - | 22 | 75 | 65 | A |
| E2S-30x12 | 30 | 38 | 68 | 12 | 28 | - | 22 | 75 | 65 | A |
| E2S-30x16 | 30 | 50 | 68 | 16 | 28 | 30 | 22 | 88 | 78 | A |
| E2S-30x20 | 30 | 54 | 68 | 20 | 28 | 30 | 22 | 96 | 80 | B |
| E2S-30x25 | 30 | 57 | 68 | 25 | 28 | 30 | 22 | 112 | 100 | B |
| E2S-30x32 | 30 | 65 | 68 | 32 | - | 30 | 22 | 142 | 128 | B |
| E2S-30x40 | 30 | 65 | 68 | 40 | 28 | - | 22 | 75 | 67 | B |
| E2S-40x6 | 40 | 32 | 83 | 6 | 32.5 | - | 22 | 75 | 65 | A |
| E2S-40x8 | 40 | 34 | 83 | 8 | 32.5 | - | 22 | 75 | 65 | A |
| E2S-40x10 | 40 | 38 | 83 | 10 | 32.5 | - | 22 | 75 | 65 | A |
| E2S-40x12 | 40 | 38 | 83 | 12 | 32.5 | - | 22 | 75 | 65 | A |
| E2S-40x16 | 40 | 50 | 83 | 16 | 32.5 | - | 22 | 88 | 78 | A |
| E2S-40x20 | 40 | 54 | 83 | 20 | 32.5 | - | 22 | 96 | 85 | A |
| E2S-40x25 | 40 | 58 | 83 | 25 | 32.5 | - | 22 | 112 | 100 | B |
| E2S-40x32 | 40 | 63 | 83 | 32 | 32.5 | - | 22 | 142 | 128 | B |
| E2S-40x40 | 40 | 73 | 83 | 40 | 32.5 | - | 22 | 174 | 150 | B |
| E2S-50x16 | 50 | 50 | 98 | 16 | 35 | - | 30 | 103 | 93 | A |
| E2S-50x20 | 50 | 54 | 98 | 20 | 35 | - | 30 | 103 | 94 | A |
| E2S-50x25 | 50 | 59 | 98 | 25 | 35 | - | 30 | 120 | 108 | A |
| E2S-50x32 | 50 | 65 | 98 | 32 | 35 | - | 30 | 150 | 128 | B |
| E2S-50x40 | 50 | 73 | 98 | 40 | 35 | - | 30 | 182 | 160 | B |
| E2S-50x50 | 50 | 83 | 98 | 50 | 35 | - | 30 | 182 | 160 | B |
| E2S-60x25 | 60 | 59 | 123 | 25 | 42.5 | - | 30 | 120 | 108 | A |
| E2S-60x32 | 60 | 65 | 123 | 32 | 42.5 | - | 30 | 150 | 138 | A |
| E2S-60x40 | 60 | 73 | 123 | 40 | 42.5 | - | 30 | 182 | 160 | B |
| E2S-60x50 | 60 | 76 | 123 | 50 | 42.5 | - | 30 | 202 | 180 | B |
| E2S-60x60 | 60 | 96 | 123 | 60 | 42.5 | - | 30 | 202 | 180 | B |

ER Collet Chuck Form E4 ER 夹头刀柄



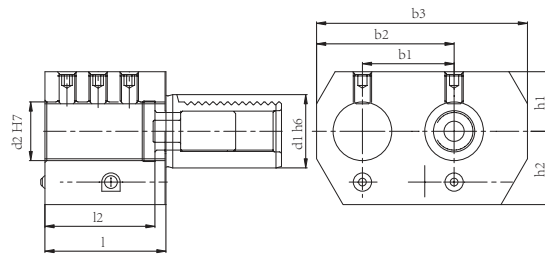
| Size | d1 | d2 | d3 | d4 | h1 | l1 | l2 |
|------------|----|----|-----|------|------|-----|----|
| E4-16xER16 | 16 | 32 | 40 | 1-10 | 18 | 44 | 13 |
| E4-16xER20 | 16 | 35 | 40 | 1-13 | 18 | 44 | 13 |
| E4-20xER16 | 20 | 32 | 50 | 1-10 | - | 44 | 18 |
| E4-20xER20 | 20 | 35 | 50 | 1-13 | - | 59 | 18 |
| E4-20xER25 | 20 | 42 | 50 | 2-16 | - | 65 | 18 |
| E4-20xER32 | 20 | 50 | 50 | 2-20 | - | 67 | 18 |
| E4-25xER16 | 25 | 32 | 58 | 1-10 | 25 | 44 | 18 |
| E4-25xER25 | 25 | 42 | 58 | 2-16 | 25 | 58 | 18 |
| E4-25xER32 | 25 | 50 | 58 | 2-20 | 25 | 63 | 18 |
| E4-30xER16 | 30 | 32 | 68 | 1-10 | 28 | 48 | 22 |
| E4-30xER20 | 30 | 35 | 68 | 1-13 | 28 | 59 | 22 |
| E4-30xER25 | 30 | 42 | 68 | 2-16 | 28 | 57 | 22 |
| E4-30xER32 | 30 | 50 | 68 | 2-20 | 28 | 78 | 22 |
| E4-30xER40 | 30 | 63 | 68 | 3-26 | 28 | 80 | 22 |
| E4-40xER20 | 40 | 35 | 83 | 1-13 | 32.5 | 59 | 22 |
| E4-40xER25 | 40 | 42 | 83 | 2-16 | 32.5 | 57 | 22 |
| E4-40xER32 | 40 | 50 | 83 | 2-20 | 32.5 | 78 | 22 |
| E4-40xER40 | 40 | 63 | 83 | 3-26 | 32.5 | 80 | 22 |
| E4-50xER25 | 50 | 42 | 98 | 2-16 | 35 | 67 | 30 |
| E4-50xER32 | 50 | 50 | 98 | 2-20 | 35 | 92 | 30 |
| E4-50xER40 | 50 | 63 | 98 | 3-26 | 35 | 80 | 30 |
| E4-60xER32 | 60 | 50 | 123 | 2-20 | 42.5 | 78 | 30 |
| E4-60xER40 | 60 | 63 | 123 | 3-26 | 42.5 | 80 | 30 |
| E4-80xER40 | 80 | 63 | 158 | 3-26 | 55 | 100 | 40 |

Double Boring Bar Holder, Right 右侧双搪孔刀柄



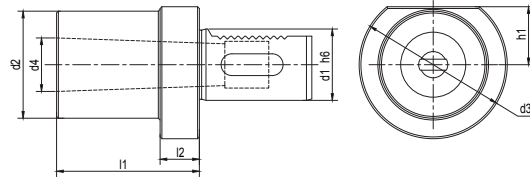
| Size | d1 | d2 | h1 | h2 | l1 | l2 | b1 | b2 | b3 |
|----------|----|----|------|------|----|----|----|-----|-----|
| E7-20x16 | 20 | 16 | 25 | 25 | 45 | 42 | 32 | 51 | 76 |
| E7-20x20 | 20 | 20 | 25 | 25 | 45 | 42 | 32 | 51 | 76 |
| E7-30x25 | 30 | 25 | 28 | 32 | 56 | 52 | 45 | 65 | 95 |
| E7-40x32 | 40 | 32 | 32.5 | 40 | 66 | 60 | 50 | 75 | 115 |
| E7-50x32 | 50 | 32 | 32.5 | 47.5 | 66 | 60 | 50 | 75 | 115 |
| E7-50x50 | 50 | 50 | 35 | 49 | 90 | 80 | 68 | 103 | 152 |

Double Boring Bar Holder, Left 左侧双搪孔刀柄



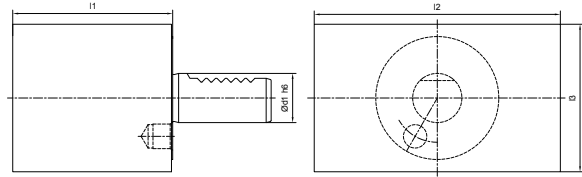
| Size | d1 | d2 | h1 | h2 | l1 | l2 | b1 | b2 | b3 |
|----------|----|----|------|------|----|----|----|-----|-----|
| E8-20x16 | 20 | 16 | 25 | 25 | 45 | 42 | 32 | 51 | 76 |
| E8-20x20 | 20 | 20 | 25 | 25 | 45 | 42 | 32 | 51 | 76 |
| E8-30x25 | 30 | 25 | 28 | 32 | 56 | 52 | 45 | 65 | 95 |
| E8-40x32 | 40 | 32 | 32.5 | 40 | 66 | 60 | 50 | 75 | 115 |
| E8-50x32 | 50 | 32 | 32.5 | 47.5 | 66 | 60 | 50 | 75 | 115 |
| E8-50x50 | 50 | 50 | 35 | 49 | 90 | 80 | 68 | 103 | 152 |

Morse Taper Adapter Form F 带扁尾莫氏刀柄



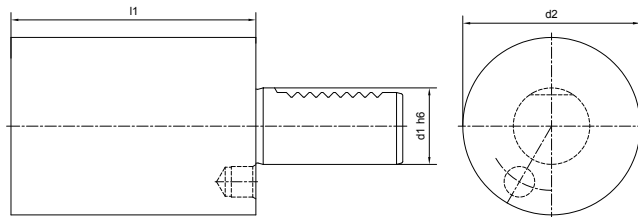
| Size | d1 | d2 | d3 | MK | d4 | h1 | l1 | l2 |
|----------|----|----|-----|----|--------|------|-----|----|
| F-30xMT1 | 30 | - | 68 | 1 | 12.065 | 28 | 27 | - |
| F-30xMT2 | 30 | 55 | 68 | 2 | 17.78 | 28 | 36 | 27 |
| F-30xMT3 | 30 | 55 | 68 | 3 | 23.825 | 28 | 66 | 41 |
| F-40xMT1 | 40 | 55 | 83 | 1 | 12.065 | 32.5 | 23 | 22 |
| F-40xMT2 | 40 | 55 | 83 | 2 | 17.78 | 32.5 | 36 | 22 |
| F-40xMT3 | 40 | 58 | 83 | 3 | 23.825 | 32.5 | 36 | 22 |
| F-40xMT4 | 40 | 68 | 83 | 4 | 31.267 | 32.5 | 80 | 22 |
| F-50xMT2 | 50 | 55 | 98 | 2 | 17.78 | 35 | 36 | 30 |
| F-50xMT3 | 50 | 58 | 98 | 3 | 23.825 | 35 | 45 | 30 |
| F-50xMT4 | 50 | 68 | 98 | 4 | 31.267 | 35 | 55 | 30 |
| F-50xMT5 | 50 | 75 | 98 | 5 | 44.399 | 35 | 168 | - |
| F-60xMT2 | 60 | 55 | 123 | 2 | 17.78 | 42.5 | 35 | 30 |
| F-60xMT3 | 60 | 58 | 123 | 3 | 23.825 | 42.5 | 45 | 30 |
| F-60xMT4 | 60 | 68 | 123 | 4 | 31.267 | 42.5 | 55 | 30 |
| F-60xMT5 | 60 | 98 | 123 | 5 | 44.399 | 42.5 | 64 | 30 |

Rectangular Soft Blank Form A1 方形基础柄



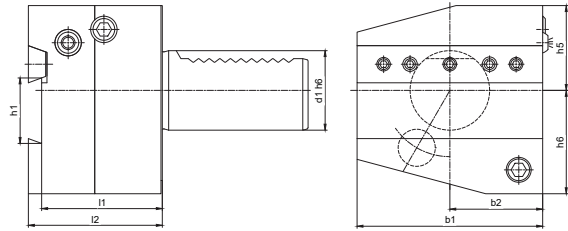
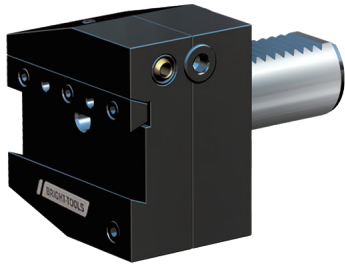
| Size | d1 | l1 | l2 | l3 |
|-----------|----|-----|-----|-----|
| A1-16x44 | 16 | 44 | 78 | 44 |
| A1-20x65 | 20 | 65 | 100 | 60 |
| A1-25x75 | 25 | 75 | 100 | 60 |
| A1-30x85 | 30 | 85 | 130 | 76 |
| A1-40x100 | 40 | 100 | 151 | 96 |
| A1-50x125 | 50 | 125 | 160 | 120 |
| A1-60x160 | 60 | 160 | 165 | 125 |
| A1-80x200 | 80 | 200 | 220 | 160 |

Round Soft Blank Form A2 圆形基础柄



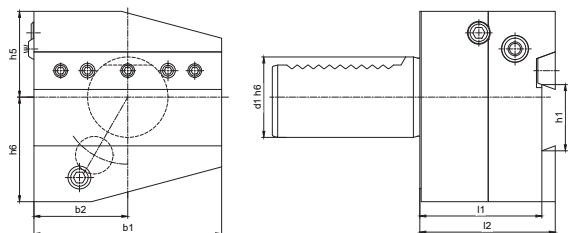
| Size | d1 | d2 | l1 |
|-----------|----|-----|-----|
| A2-16x60 | 16 | 40 | 60 |
| A2-20x70 | 20 | 50 | 70 |
| A2-25x80 | 25 | 58 | 80 |
| A2-25x200 | 25 | 58 | 200 |
| A2-30x100 | 30 | 68 | 100 |
| A2-30x240 | 30 | 68 | 240 |
| A2-40x120 | 40 | 83 | 120 |
| A2-40x320 | 40 | 83 | 320 |
| A2-50x135 | 50 | 98 | 135 |
| A2-50x400 | 50 | 98 | 400 |
| A2-60x150 | 60 | 123 | 150 |
| A2-60x480 | 60 | 123 | 480 |
| A2-80x500 | 80 | 158 | 500 |

Cutting Off Tool Holder Right Height Adjustable 短型横向切刀右刀夹



| Size | d1 | b1 | b2 | h1 | h5 | h6 | l1 | l2 |
|--------|----|-----|------|----|----|------|----|----|
| AR2026 | 20 | 60 | 30 | 26 | 28 | 36 | 44 | 50 |
| AR2526 | 25 | 60 | 30 | 26 | 28 | 36 | 44 | 50 |
| AR3026 | 30 | 70 | 35 | 26 | 32 | 39 | 44 | 50 |
| AR4026 | 40 | 85 | 42.5 | 26 | 43 | 41.5 | 44 | 50 |
| AR4032 | 40 | 85 | 42.5 | 32 | 43 | 41.5 | 44 | 50 |
| AR5026 | 50 | 100 | 50 | 26 | 43 | 45 | 44 | 50 |
| AR5032 | 50 | 100 | 50 | 32 | 43 | 45 | 44 | 50 |
| AR6032 | 60 | 125 | 62.5 | 32 | 48 | 55 | 44 | 50 |

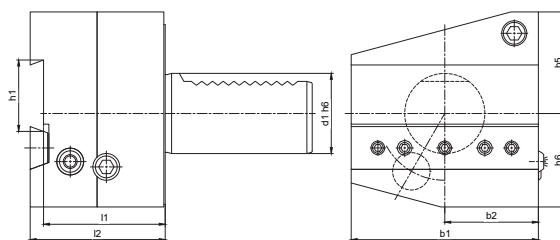
Cutting Off Tool Holder Left Height Adjustable 短型横向切刀左刀夹



| Size | d1 | b1 | b2 | h1 | h5 | h6 | l1 | l2 |
|--------|----|-----|------|----|----|------|----|----|
| AL2026 | 20 | 60 | 30 | 26 | 28 | 36 | 44 | 50 |
| AL2526 | 25 | 60 | 30 | 26 | 32 | 36 | 44 | 50 |
| AL3026 | 30 | 70 | 35 | 26 | 32 | 39 | 44 | 50 |
| AL4026 | 40 | 85 | 42.5 | 26 | 43 | 41.5 | 44 | 50 |
| AL4032 | 40 | 85 | 42.5 | 32 | 43 | 41.5 | 44 | 50 |
| AL5026 | 50 | 100 | 50 | 26 | 43 | 45 | 44 | 50 |
| AL5032 | 50 | 100 | 50 | 32 | 43 | 45 | 44 | 50 |
| AL6032 | 60 | 125 | 62.5 | 32 | 48 | 55 | 44 | 50 |

Cutting Off Tool Holder Inverted Right Height Adjustable

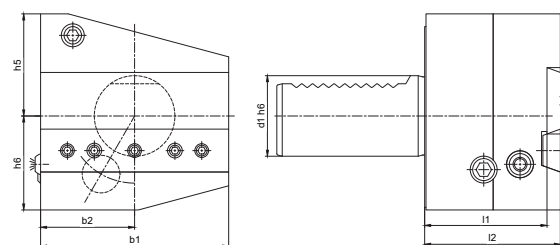
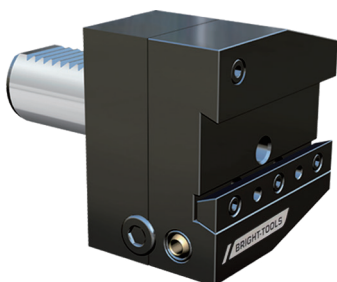
短型横向切刀反切右刀夹



| Size | d1 | b1 | b2 | h1 | h5 | h6 | l1 | l2 |
|---------|----|-----|------|----|----|------|----|----|
| ARU2526 | 25 | 60 | 30 | 26 | 36 | 28 | 44 | 50 |
| ARU3026 | 30 | 70 | 35 | 26 | 38 | 35 | 44 | 50 |
| ARU4026 | 40 | 85 | 42.5 | 26 | 43 | 41.5 | 44 | 50 |
| ARU4032 | 40 | 85 | 42.5 | 32 | 43 | 41.5 | 44 | 50 |
| ARU5026 | 50 | 100 | 50 | 26 | 43 | 45 | 44 | 50 |
| ARU5032 | 50 | 100 | 50 | 32 | 43 | 45 | 44 | 50 |
| ARU6032 | 60 | 125 | 62.5 | 32 | 48 | 55 | 44 | 50 |

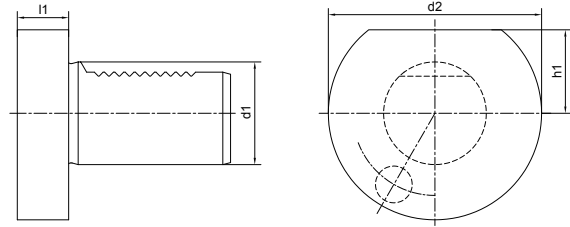
Cutting Off Tool Holder Inverted Left Height Adjustable

短型横向切刀反切左刀夹



| Size | d1 | b1 | b2 | h1 | h5 | h6 | l1 | l2 |
|---------|----|-----|------|----|----|------|----|----|
| ALU2526 | 25 | 60 | 30 | 26 | 36 | 28 | 44 | 50 |
| ALU3026 | 30 | 70 | 35 | 26 | 38 | 35 | 44 | 50 |
| ALU4026 | 40 | 85 | 42.5 | 26 | 43 | 41.5 | 44 | 50 |
| ALU4032 | 40 | 85 | 42.5 | 32 | 43 | 41.5 | 44 | 50 |
| ALU5026 | 50 | 100 | 50 | 26 | 43 | 45 | 44 | 50 |
| ALU5032 | 50 | 100 | 50 | 32 | 43 | 45 | 44 | 50 |
| ALU6032 | 60 | 125 | 62.5 | 32 | 48 | 55 | 44 | 50 |

Protection Plug Form Z2 保护塞



Steel Plug

| Size | d1 | d2 | h1 | l1 |
|-----------|----|-----|------|----|
| Z2-16x13S | 16 | 40 | 18 | 13 |
| Z2-20x16S | 20 | 50 | 23 | 16 |
| Z2-25x16S | 25 | 58 | 25 | 16 |
| Z2-30x16S | 30 | 68 | 28 | 16 |
| Z2-40x20S | 40 | 83 | 32.5 | 20 |
| Z2-50x20S | 50 | 98 | 35 | 20 |
| Z2-60x20S | 60 | 123 | 42.5 | 20 |

Plastic Plug

| Size | d1 | d2 | h1 | l1 |
|-----------|----|-----|------|----|
| Z2-16x13P | 16 | 40 | 18 | 13 |
| Z2-20x16P | 20 | 50 | 23 | 16 |
| Z2-25x16P | 25 | 58 | 25 | 16 |
| Z2-30x16P | 30 | 68 | 28 | 16 |
| Z2-40x20P | 40 | 83 | 32.5 | 20 |
| Z2-50x20P | 50 | 98 | 35 | 20 |
| Z2-60x20P | 60 | 123 | 42.5 | 20 |